

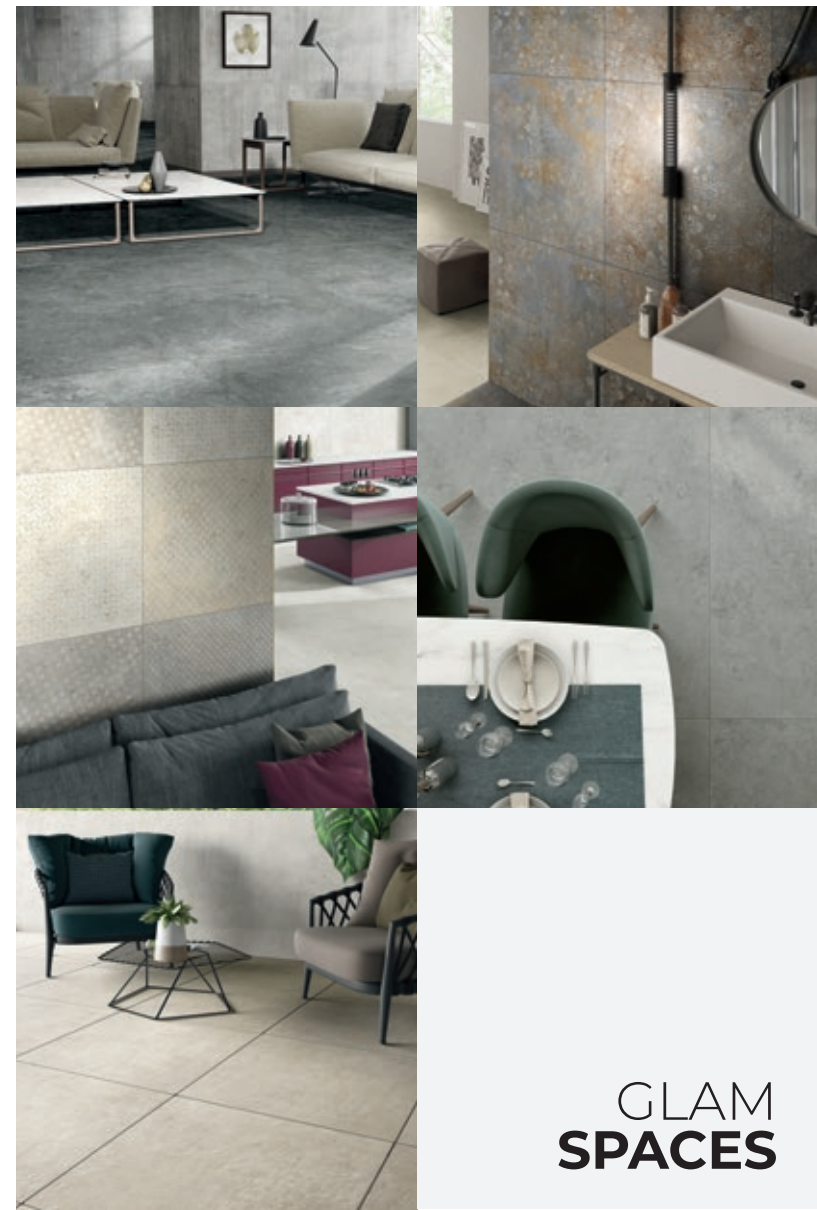
# GLAM

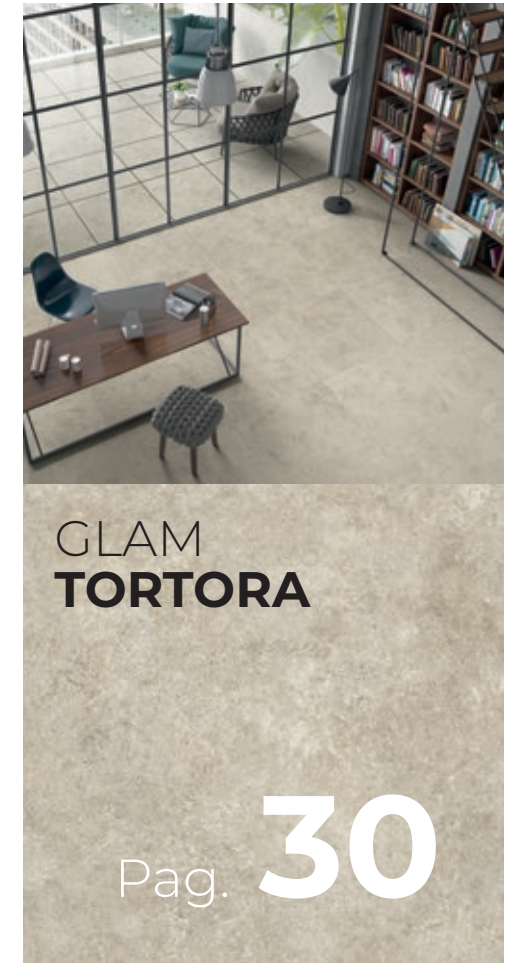
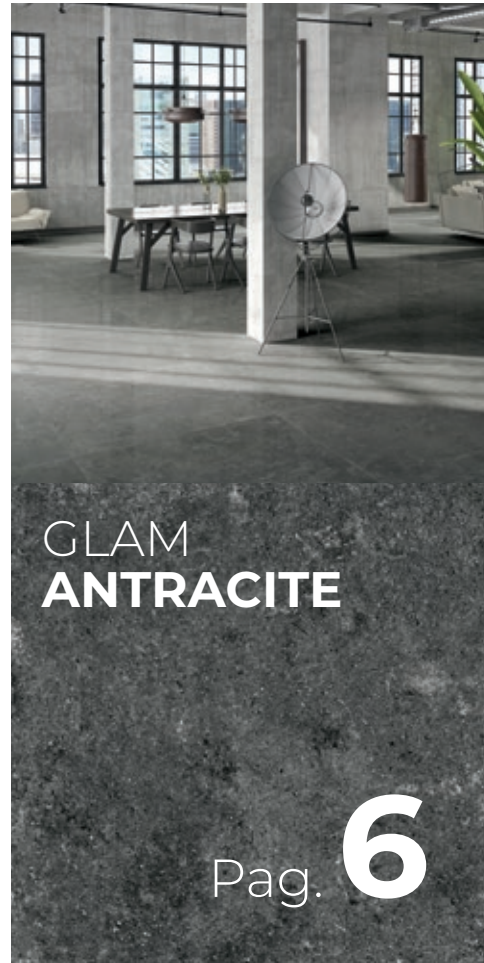
GRES FINE PORCELLANATO



★★★★★  
**CENTURY**<sup>®</sup>  
FINCIBEC GROUP







# GLAM SPACES

Gres fine porcellanato  
Fine porcelain stoneware

**Glam è contemporaneità e versatilità di utilizzo.**  
La superficie è quella di una pietra armoniosamente stonalizzata  
in grado di vestire ambienti dalle diverse destinazioni d'uso, dal residenziale al commerciale.  
Alla varietà dei colori - **antracite, beige, bianco, grigio, tortora** -  
si aggiunge quella dei formati: **120x120, 60x120, 80x80, 60x60.**

**Glam is contemporary and versatile.**  
With a stone surface, featuring harmonious variations  
in hue ideal for spaces of all kinds, from residential to commercial.  
Available in a variety of colours - **antracite, beige, bianco, grigio, tortora** -  
and sizes: **120x120, 60x120, 80x80, 60x60.**



# NOUANCE

COLOURS



GLAM **ANTRACITE**

GLAM **BEIGE**

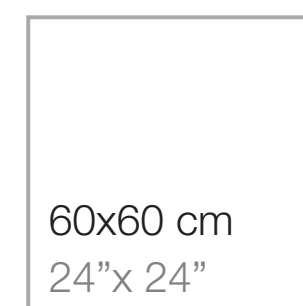
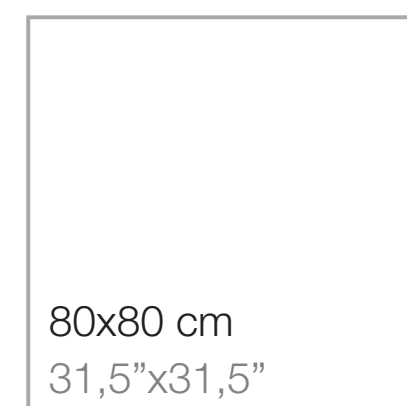
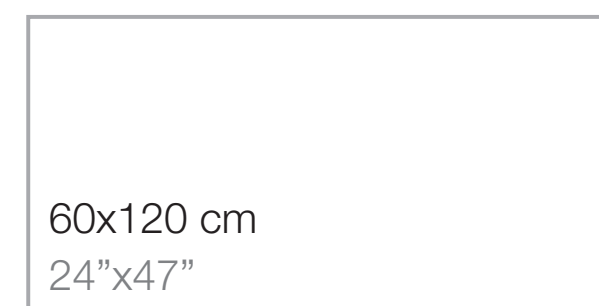
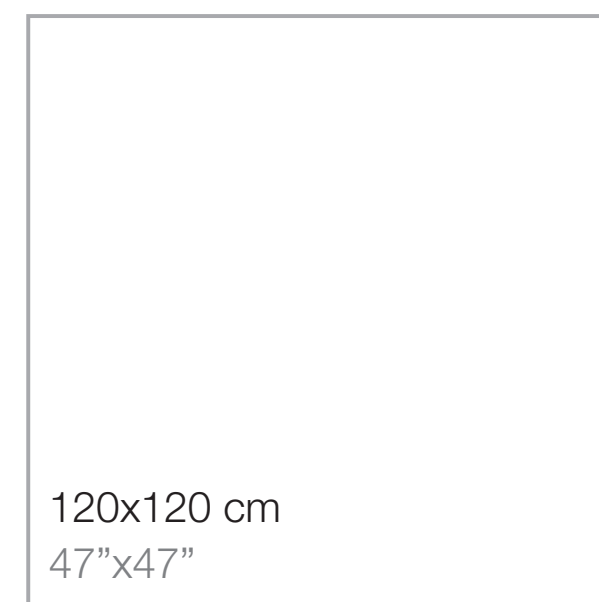
GLAM **BIANCO**

GLAM **GRIGIO**

GLAM **TORTORA**

# FORMATI

SIZES



# SUPERFICI

SURFACES

## FINITURA NATURALE

Natural finish

## FINITURA LAPPATA

Lapped finish

## FINITURA GRIP

Grip finish

Disponibile in 3 colori, un formato e due spessori.  
Available in three colours, one size and two thicknesses.



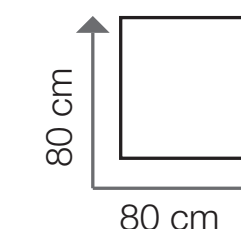
GLAM **BEIGE**



GLAM **GRIGIO**



GLAM **TORTOTA**



**TWO**

h 20 mm

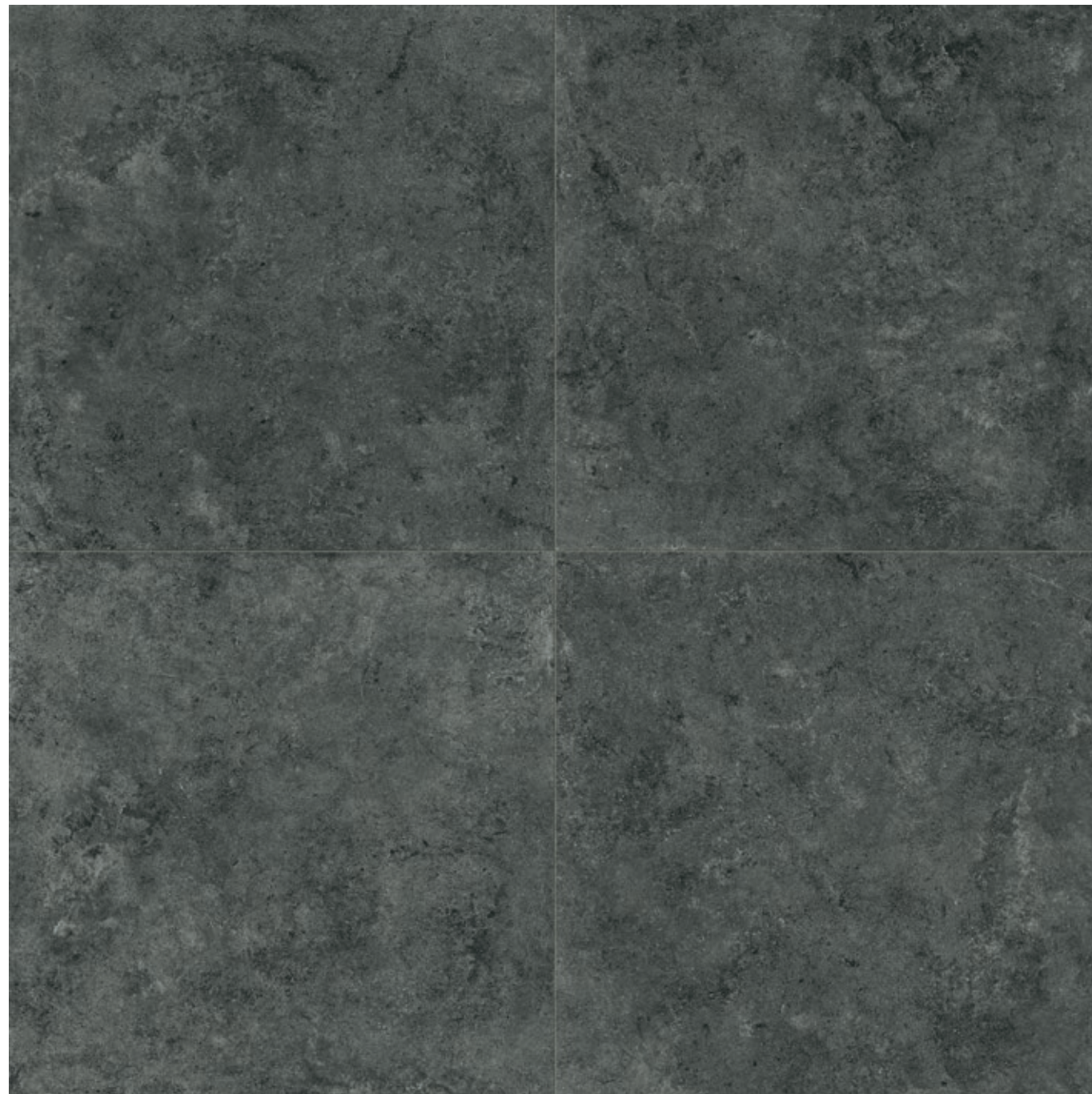
h 9 mm

## BORDO RETTIFICATO

Rectified edge

Gres fine porcellanato  
Fine porcelain stoneware





# GLAM ANTRACITE

Antracite, contemporaneo e voluttuoso.  
La tinta, scura e intensa, conferisce profondità  
e ricercatezza agli ambienti.

Anthracite is contemporary and voluptuous,  
a dark, intense hue adding depth and  
refinement to any space.











# GLAM ANTRACITE

Gres fine porcellanato  
Fine porcelain stoneware





# GLAM BEIGE

Beige, delicato, raffinato, capace di conferire alla stanza un tocco di classe e di eleganza.  
Delicate, refined beige adds a touch of class and elegance to the room.







**FLOOR**  
Glam Beige Nat. 80x80 cm - 31,5"x31,5"

**WALL**  
Canvas Lapp. 80x80 cm - 31,5"x31,5"





# GLAM BEIGE

Gres fine porcellanato  
Fine porcelain stoneware





# GLAM BIANCO

Bianco, puro, semplice e rilassante.  
Un autentico gioiello che impreziosisce  
l'ambiente, un colore senza tempo.

Pure, simple, relaxing white: a true jewel  
adding value to any space and making it truly  
timeless.







**FLOOR**  
Glam Bianco Nat. 60x120 cm - 24"x 47"

**WALL**  
Glam Bianco Nat. 60x120 cm - 24"x 47"  
Glamour Lapp. 60x60 cm - 24"x 24"





# GLAM BIANCO

Gres fine porcellanato  
Fine porcelain stoneware





# GLAM GRIGIO

Grigio, tinta neutra per eccellenza, la sua raffinatezza permette di creare ambientazioni rilassanti e accoglienti senza rinunciare ad un tocco chic.

The refinement of grey, the most neutral of hues, creates relaxing, cosy spaces with a chic touch.







FLOOR  
Glam Grigio Nat. 120x120 cm - 47"x 47"





# GLAM GRIGIO

Gres fine porcellanato  
Fine porcelain stoneware





# GLAM TORTORA

Tortora, elegante, ricercato e dalla forte personalità. Una tinta neutra adatta ad ogni ambiente in quanto armonioso connubio tra il calore del marrone e la raffinatezza del grigio.

Elegant, refined dove grey has a bold personality. This is a neutral colour well-suited to any kind of space, offering a harmonious combination of the warmth of brown and the refinement of grey.







FLOOR  
Glam Tortora Lapp. 80x80 cm - 31,5"x31,5"  
**TWO** Glam Tortora Grip 80x80 cm - 31,5"x31,5"



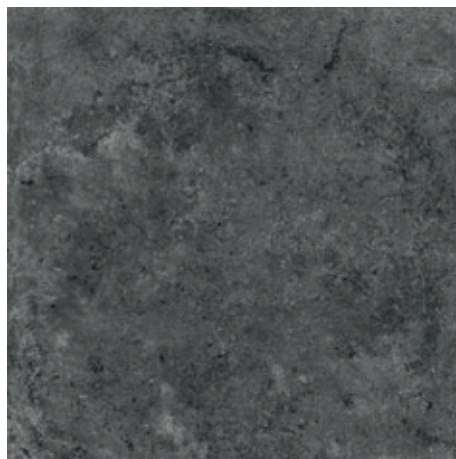


# GLAM TORTORA

Gres fine porcellanato  
Fine porcelain stoneware



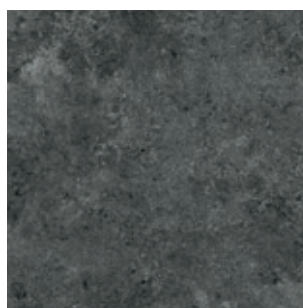
**GLAMANTRACITE 9MM**



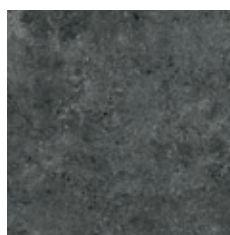
120x120 cm - 47"x 47"  
112880 Nat. Rett.  
112881 Lapp. Rett.



60x120 cm - 24"x 47"  
112898 Nat. Rett.  
112899 Lapp. Rett.

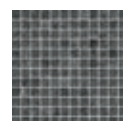


80x80 cm - 31,5"x 31,5"  
112910 Nat. Rett.  
112911 Lapp. Rett.

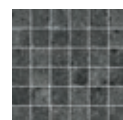


60x60 cm - 24"x 24"  
112928 Nat. Rett.  
113149 Lapp. Rett.

**MOSAICI**



2,5x2,5 cm - 1"x 1"  
30x30 cm - 12"x12"  
su foglio  
113251 Nat. Rett.

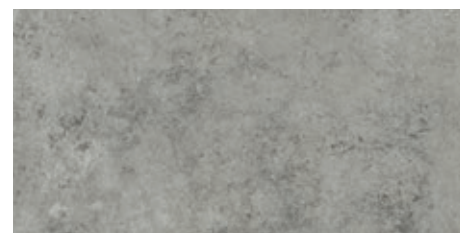


4,7x4,7 cm - 1,8"x1,8"  
30x30 cm - 12"x12"  
su rete  
113224 Nat. Rett.

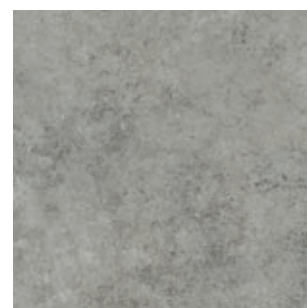
**GLAMGRIGIO 9MM**



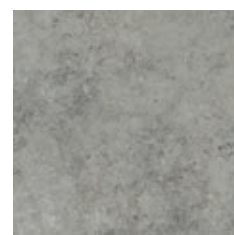
120x120 cm - 47"x 47"  
112877 Nat. Rett.  
112891 Lapp. Rett.



60x120 cm - 24"x 47"  
112896 Nat. Rett.  
112902 Lapp. Rett.

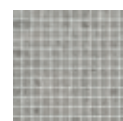


80x80 cm - 31,5"x 31,5"  
112907 Nat. Rett.  
112915 Lapp. Rett.  
112919 Grip Rett.

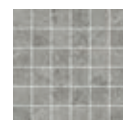


60x60 cm - 24"x 24"  
112924 Nat. Rett.  
113147 Lapp. Rett.

**MOSAICI**



2,5x2,5 cm - 1"x 1"  
30x30 cm - 12"x12"  
su foglio  
113254 Nat. Rett.



4,7x4,7 cm - 1,8"x1,8"  
30x30 cm - 12"x12"  
su rete  
113222 Nat. Rett.

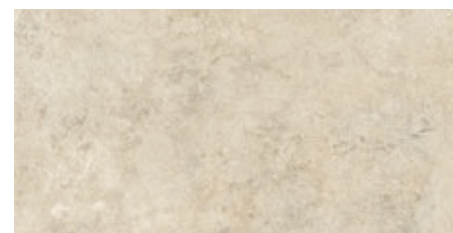


**TWO**

**GLAMBEIGE 9MM**



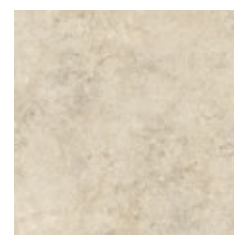
120x120 cm - 47"x 47"  
112872 Nat. Rett.  
112888 Lapp. Rett.



60x120 cm - 24"x 47"  
112894 Nat. Rett.  
112900 Lapp. Rett.



80x80 cm - 31,5"x 31,5"  
112905 Nat. Rett.  
112912 Lapp. Rett.  
112920 Grip Rett.



60x60 cm - 24"x 24"  
112922 Nat. Rett.  
113145 Lapp. Rett.

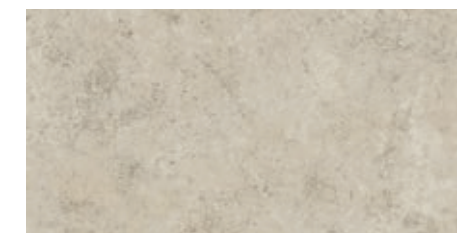


**TWO**

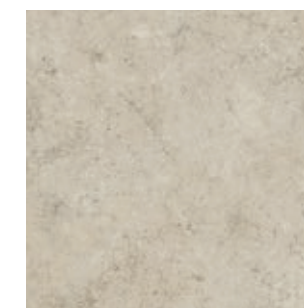
**GLAMTORTORA 9MM**



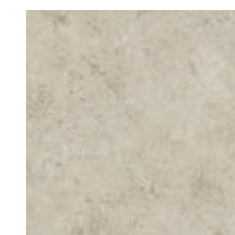
120x120 cm - 47"x 47"  
112879 Nat. Rett.  
112893 Lapp. Rett.



60x120 cm - 24"x 47"  
112897 Nat. Rett.  
112903 Lapp. Rett.



80x80 cm - 31,5"x 31,5"  
112908 Nat. Rett.  
112917 Lapp. Rett.  
112918 Grip Rett.



60x60 cm - 24"x 24"  
112925 Nat. Rett.  
113148 Lapp. Rett.



**TWO**

**MOSAICI**



2,5x2,5 cm - 1"x 1"  
30x30 cm - 12"x12"  
su foglio  
113255 Nat. Rett.

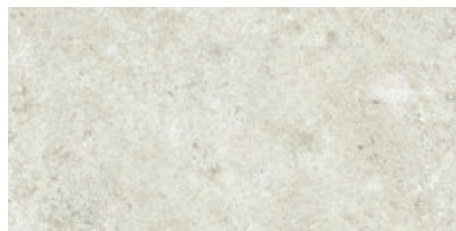


4,7x4,7 cm - 1,8"x1,8"  
30x30 cm - 12"x12"  
su rete  
113223 Nat. Rett.





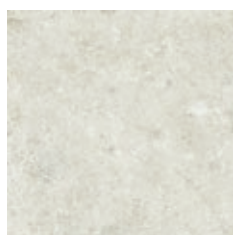
120x120 cm - 47"x 47"  
112876 Nat. Rett.  
112889 Lapp. Rett.



60x120 cm - 24"x 47"  
112895 Nat. Rett.  
112901 Lapp. Rett.



80x80 cm - 31,5"x 31,5"  
112906 Nat. Rett.  
112913 Lapp. Rett.



60x60 cm - 24"x 24"  
112923 Nat. Rett.  
113146 Lapp. Rett.

MOSAICI



2,5x2,5 cm - 1"x 1"  
30x30 cm - 12"x12"  
su foglio  
113253 Nat. Rett.



4,7x4,7 cm - 1,8"x1,8"  
30x30 cm - 12"x12"  
su rete  
113221 Nat. Rett.



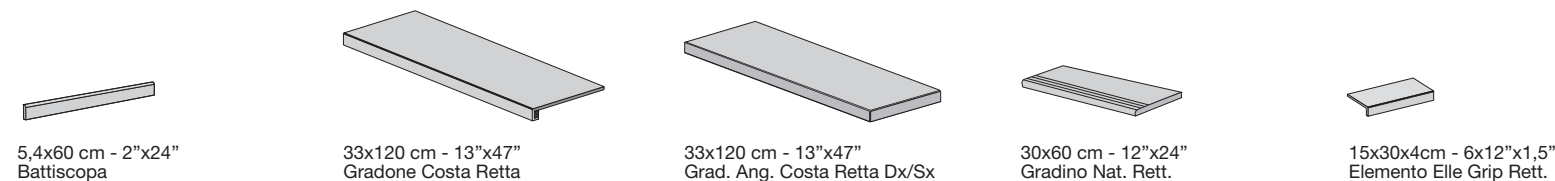
80x80 cm - 31,5"x 31,5"  
\*113182 Canvas Lapp. Rett.  
\*113750 Canvas Nat. Rett.



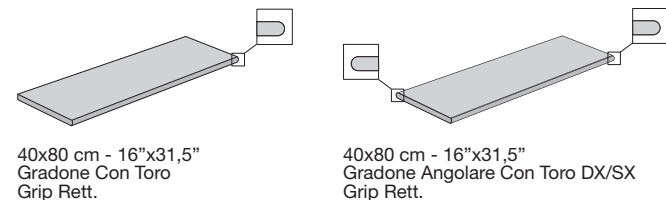
60x60 cm - 24"x 24"  
\*113150 Glamour Lapp. Rett.

\*Più soggetti, confezionati random.  
Multiple subjects, packaged randomly.

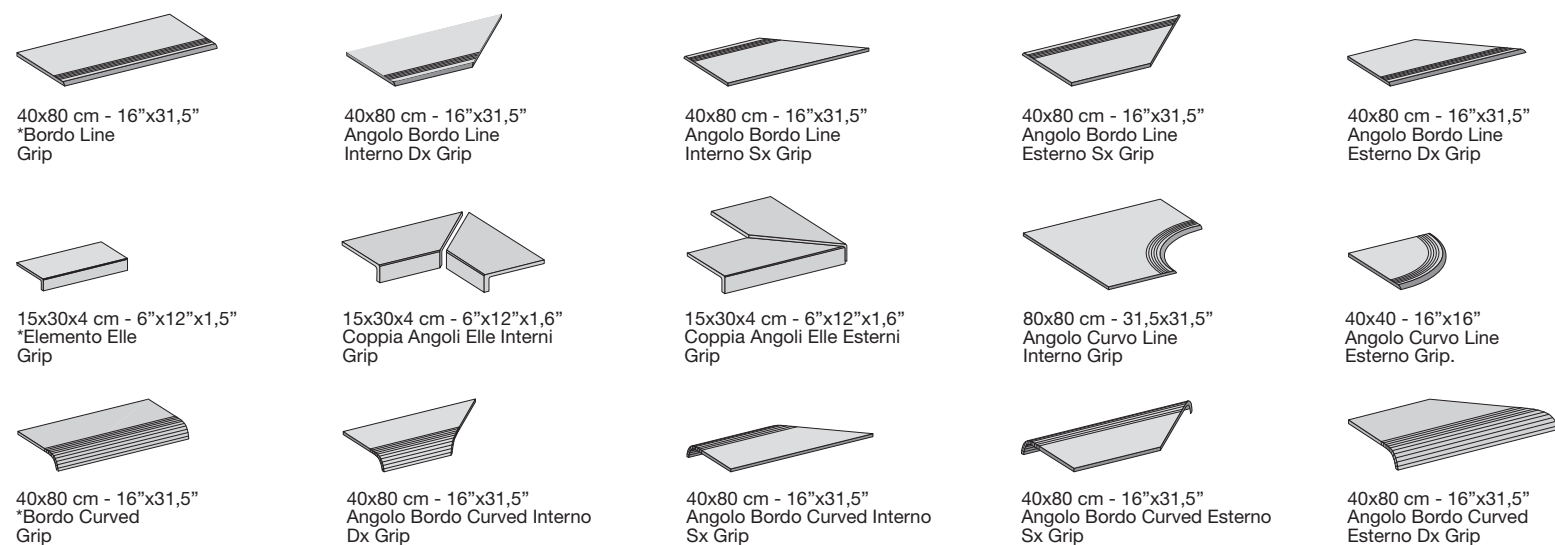
PEZZI SPECIALI - SPECIAL PIECES 9MM



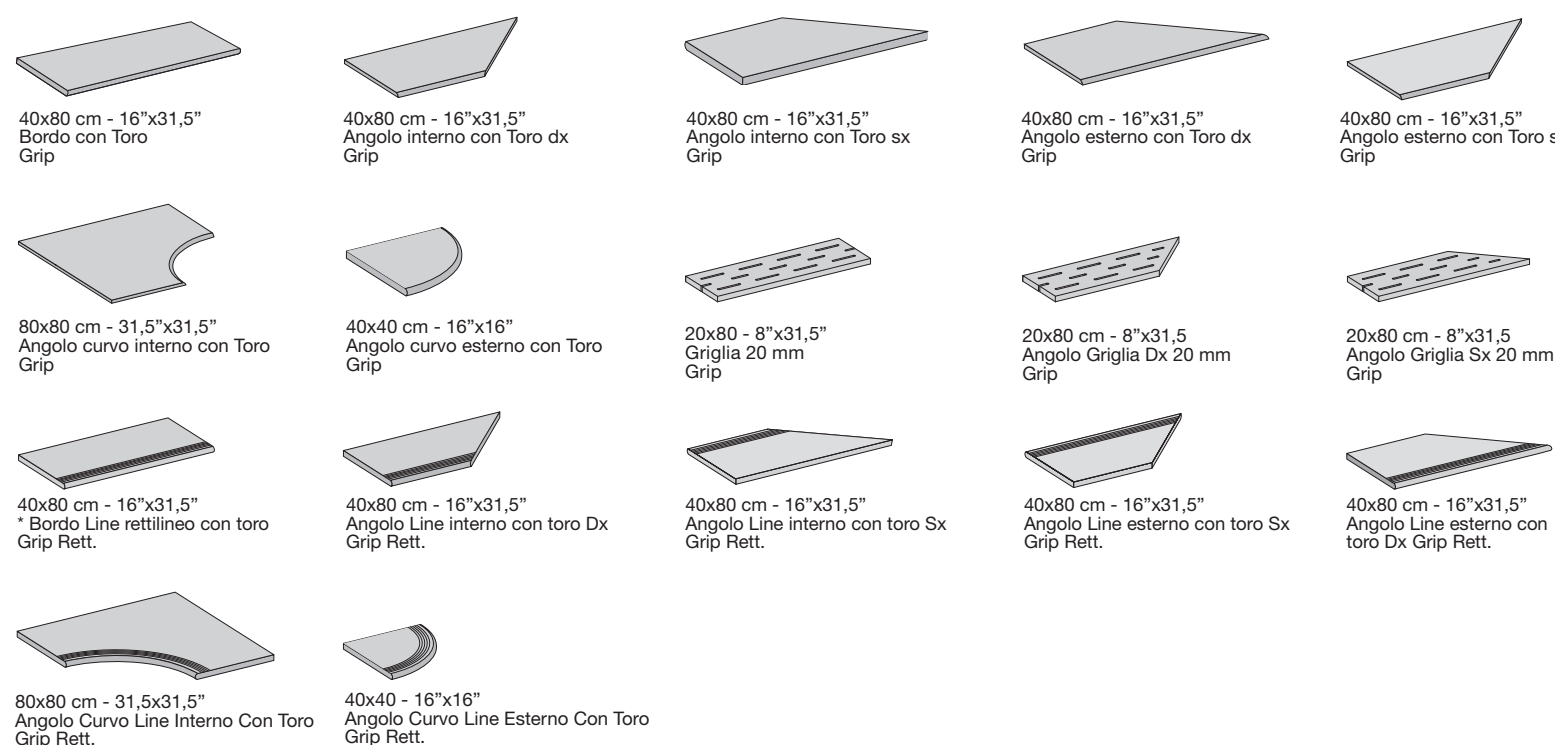
PEZZI SPECIALI - SPECIAL PIECES 20 MM TWO



POOLS&WELLNESS 9MM



POOLS&WELLNESS 20 MM TWO



\*Prezzo per ordine minimo di 20 pz. Per quantitativi inferiori, rivolgersi agli uffici commerciali per una quantificazione specifica. \*Price for a minimum order of 20 items. For smaller volumes, please contact our commercial office for a specific quote.

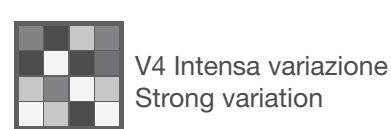
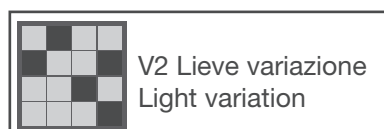
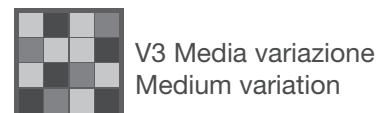
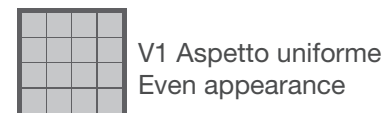


## IMBALLI - PACKAGING

	120x120 cm 47"x47"	NAT. 60x120 cm 24"x47"	LAPP. 60x120 cm 24"x47"	NAT./GRIP 80x80 cm 31,5"x31,5"	LAPP. 80x80 cm 31,5"x31,5"	TWO 80x80 cm 31,5"x31,5"	60x60 cm 24"x 24"
Pc.	2	2	2	2	2	1	3
M <sup>2</sup>	2,88	1,44	1,44	1,28	1,28	0,64	1,08
Kg	58	31	30,5	26,2	25,5	29	22,5

	120x120 cm 47"x47"	60x120 cm 24"x47"	60x120 cm 24"x47"	80x80 cm 31,5"x31,5"	80x80 cm 31,5"x31,5"	TWO 80x80 cm 31,5"x31,5"	60x60 cm 24"x 24"
Pc.	20	35	35	40	40	40	40
M <sup>2</sup>	57,6	50,4	50,4	51,2	51,2	25,6	43,2
Kg	1160	1085	1067	1048	1020	1160	900

## VARIAZIONI CROMATICHE - COLOURS VARIATIONS



È indispensabile all'atto della posa, prelevare le piastrelle da più confezioni.

It is necessary to take the tiles from several different boxes when laying them.

## CATEGORIE D'IMPIEGO - USE CLASSES

**C1** Piastrelle da pavimento consigliate per calpestio lieve.  
Floor tiles recommended for low passage areas.

**C2** Piastrelle da pavimento consigliate per calpestio leggero.  
Floor tiles recommended for light traffic areas.

**C3** Piastrelle da pavimento consigliate per calpestio medio leggero.  
Floor tiles recommended for medium light traffic areas.

**C4** Lapp.  
Piastrelle da pavimento consigliate per calpestio medio.  
Floor tiles recommended for medium traffic areas.

**C5** Grip e Nat.  
Piastrelle da pavimento consigliate per calpestio intenso.  
Floor tiles recommended for heavy traffic.

**NOTE - NOTES**  
I prodotti possono essere modificati da Fincibec senza preavviso, respingendo ogni responsabilità su possibili danni diretti o indiretti causati da potenziali modifiche.  
Fincibec reserves the right to modify its products without prior notice and cannot be held liable for direct or indirect damage caused by such modifications.

Verificare sempre la correttezza delle informazioni e dei dati relativi a codici, imballaggi e pesi, consultando il listino prezzi in vigore.  
Always refer to the price list in force to ensure correct information and data on codes, packaging, and weight.

Le tonalità dei colori riportate nel catalogo sono indicative.  
The colours shades, reported on the catalogue, are indicative.

## CARATTERISTICHE TECNICHE / GRES FINE PORCELLANATO COLORATO IN MASSA

TECHNICAL SPECIFICATIONS / COLOURED PORCELAIN STONEWARE - TECHNISCHE EIGENSCHAFTEN / DURCHFARBTES FEINSTEINZEUG - CARACTÉRISTIQUES TECHNIQUES / GRÉS FIN CÉRAME COLORÉ EN MASSE - CARACTERÍSTICAS TÉCNICAS / GRES FIN PORCELÁNICO TENDIDO EN MASA - ТЕХНИЧЕСКИЕ ХАРАКТЕРИСТИКИ / МЕЛКОЗЕРНИСТЫЙ КЕРАМОГРАНИТ, ОКРАШЕННЫЙ В МАССЕ

STANDARDS : UNI EN 14411 ANNEX G - Bla / UNI EN ISO 13006 ANNEX G - Bla

	CARATTERISTICHE TECNICHE TECHNICAL DATA TECHNISCHE DATEN CARACTÉRISTIQUES TECHNIQUES CARACTERÍSTICAS TÉCNICAS ТЕХНИЧЕСКИЕ ХАРАКТЕРИСТИКИ	TIPO DI PROVA STANDARD OF TEST NORME DU TEST TESTNORME TIPO DE PRUEBA TYPTESTACT	VALORE PRESORTO DALLE NORME INTERNATIONAL STANDARDS INTERNATIONALE NORMWERTE VALEURS PRÉVUES DES NORMATIVES VALORES PREVISTOS POR LAS NORMAS ПРЕДЪОПРЕДЕЛЕНАТА НОРМА		VALORE MEDIO CENTURY CENTURY AVERAGE VALUE CENTURY MITTELWERT VALEUR MOYENNE CENTURY VALOR MEDIO CENTURY СРЕДНОЗНАЧЕНИЕ CENTURY		
			REQUIREMENTS FOR NOMINAL SIZE N		NAT	LAPP	GRIP
			7 cm ≤ N ≤ 15 cm	N ≥ 15 cm			
	LATI SIDES - SEITEN COTES - CANTOS РАЗМЕРЫ СТОРОН	EN ISO 10545-2	± 0,9 mm	± 0,6% (± 2,0 mm)	CONFORME COMPLYING - ERFÜLLT CONFORME - CONFORME COOTBETCTBYET		
	SPESORE THICKNESS - DICKE ÉPAISSEUR - ESPESOR ТОЛЩИНА	EN ISO 10545-2	± 0,5 mm	± 5,0% (± 0,5 mm)	CONFORME COMPLYING - ERFÜLLT CONFORME - CONFORME COOTBETCTBYET		
	RETTILINITÀ DEGLI SPIGOLI STRAIGHTNESS OF SIDES - GERADUNGKEIT DER KANTEN RECTITUDE DES ARÊTES - RECTITUD DE LOS CANTOS - ПРЯМОТОЧНОСТЬ	EN ISO 10545-2	± 0,75 mm	± 0,5% (± 1,5 mm)	CONFORME COMPLYING - ERFÜLLT CONFORME - CONFORME COOTBETCTBYET		
	ORTOGONALITÀ RECTANGULARITY - RECHTWINKELIGKEIT PERPENDICULARITÉ - ORTOGONALIDAD ПРЯМОУГЛЫ СТОРОН	EN ISO 10545-2	± 0,75 mm	± 0,5% (± 2 mm)	CONFORME COMPLYING - ERFÜLLT CONFORME - CONFORME COOTBETCTBYET		
	PLANARITÀ SURFACE FLATNESS - EBENFLÄCHIGKEIT PLANÉITÉ DE SURFACE - PLANÉIDAD ПРЯМОЛИНЕЙНОСТЬ ПОВЕРХНОСТИ	EN ISO 10545-2	± 0,75 mm	± 0,5% (± 2,0 mm)	CONFORME COMPLYING - ERFÜLLT CONFORME - CONFORME COOTBETCTBYET		
	ASSORBIMENTO D'ACQUA WATER ABSORPTION - WASSERANFNAHME ABSORPTION D'EAU - ABSORCIÓN DE AGUA ВЪЗПОМОТОВАННЕ	EN ISO 10545-3		≤ 0,5%		≤ 0,1%	
	RESISTENZA ALLA FLESSIONE FLEXION RESISTANCE - BIEGEFESTIGKEIT RESISTANCE A LA FLEXION - RESISTENCIA A LA FLEXIÓN ПРЕДЕЛ ПРОЧНОСТИ ПРИ ИЗГИБЕ	EN ISO 10545-4		S ≥ 1.300 N R ≥ 35 Nmm <sup>2</sup>	CONFORME COMPLYING - ERFÜLLT CONFORME - CONFORME COOTBETCTBYET		
	RESISTENZA ALL'URTO IMPACT RESISTANCE - STOSFESTIGKEIT RESISTANCE AUX CHOCS - RESISTENCIA A LOS GOLPES УДАРЧУВСТВИТЕЛЬНОСТЬ	EN ISO 10545-5		VALORE DICHIARATO DECLARED VALUE - ANGEGEBENER WERT VALEUR DÉCLARÉE - VALOR DECLARADO - ЗАЯВЛЕННОЕ ЗНАЧЕНИЕ		> 0,80	
	COEFFICIENTE DI DILATAZIONE TERMICA LINEARE COEFFICIENT OF LINEAR THERMAL EXPANSION - LINEARER WÄRMEAUSSDEHNUNGSKOEFFIZIENT COEFFICIENT DE DILATATION THERMIQUE LINÉAIRE - COEFICIENTE DE DILATACIÓN TÉRMICA LINEAL КОЭФФИЦИЕНТ ЛИНЕЙНОГО ТЕМПЕРАТУРНОГО РАСШИРЕНИЯ	EN ISO 10545-8		VALORE DICHIARATO DECLARED VALUE - ANGEGEBENER WERT VALEUR DÉCLARÉE - VALOR DECLARADO - ЗАЯВЛЕННОЕ ЗНАЧЕНИЕ		α = 6,7 x 10 <sup>-6</sup> / °C	
	RESISTENZA AGLI SBALZI TERMICI RESISTANCE TO THERMAL SHOCKS - BESTÄNDIGKEIT GEGEN TEMPERATURSCHWANKUNGEN RESISTENCIA A LOS CHOQUES TÉRMICOS - RESISTENCIA A LOS CHOQUES TÉRMICOS СТОЙКОСТЬ К ПЕРЕПАДАМ ТЕМПЕРАТУРЫ	EN ISO 10545-9		TEST SUPERATO SECONDO EN ISO 10545-1 TEST PASSED ACCORDING TO - TEST BESTANDEN NACH TEXTE DÉPASSÉ SELON - PRUEBA SUPERADA SEGUN ИСПЫТАНИЕ ПРОЙДЕНО В СООТВЕТСТВИИ С		NESSUN DANNO NO DAMAGE - KEIN SCHADEN AUCUN DOMMAGE - NIUNDAÑO БЕЗ ПОРЯДКОВ	
	DILATAZIONE ALL'UMIDITÀ (IN MM) MOISTURE EXPANSION (IN MM) - FEUCHTIGKEITSBEDINGTE AUSDEHNUNG (IN MM) DILATACION A LA HUMEDAD (EN MM) - DILATACION CON LA HUMEDAD (EN MM) РАСШИРЕНИЕ ПРИ ВЛАЖНОСТИ (В ММ)	EN ISO 10545-10		VALORE DICHIARATO DECLARED VALUE - ANGEGEBENER WERT VALEUR DÉCLARÉE - VALOR DECLARADO - ЗАЯВЛЕННОЕ ЗНАЧЕНИЕ		MAX 0,1 mm/m	
	RESISTENZA AL GELO FROST RESISTANCE - FROSTBESTÄNDIGKEIT RESISTENCIA AL GEL - RESISTENCIA AL HIELO МОРОЗОСТОЙКОСТЬ	EN ISO 10545-12		TEST SUPERATO SECONDO EN ISO 10545-1 TEST PASSED ACCORDING TO - TEST BESTANDEN NACH TEXTE DÉPASSÉ SELON - PRUEBA SUPERADA SEGUN ИСПЫТАНИЕ ПРОЙДЕНО В СООТВЕТСТВИИ С		NESSUN DANNO NO DAMAGE - KEIN SCHADEN AUCUN DOMMAGE - NIUNDAÑO БЕЗ ПОРЯДКОВ	
	RESISTENZA AI PRODOTTI CHIMICI USO DOMESTICO E ADDITIVI PER PISCINA RESISTANCE TO HOUSEHOLD AND SWIMMING POOL CHEMICAL PRODUCTS - REESTÄNDIGKEIT GEGEN HAUSHALTS-CHEMIKALIEN UND ZUSATZSTOFFE FÜR SWIMMINGPOOLS - RESISTENCIA A LOS PRODUCTOS QUÍMICOS DE USO DOMÉSTICO Y ADITIVOS PARA PISCINA - СТОЙКОСТЬ К БЫТОВЫМ ХИМИЧЕСКИМ ПРОДУКТАМ И ДОБАВКАМ БАССЕЙНОВ	EN ISO 10545-13		0 MIN	CONFORME COMPLYING - ERFÜLLT CONFORME - CONFORME COOTBETCTBYET		
	RESISTENZA A BASSE CONCENTRAZIONI DI ACIDI E ALCALI RESISTANCE TO LOW CONCENTRATIONS OF ACIDS AND ALKALI - BESTÄNDIGKEIT BEI NIEDRIGEN KONZENTRATIONEN VON SÄUREN UND LAUGEN - RESISTENCIA A BAJAS CONCENTRACIONES DE ÁCIDOS ET ALCALIS - RESISTENCIA A BAJAS CONCENTRACIONES DE ÁCIDOS Y ALCALIS - СТОЙКОСТЬ К ДЕЙСТВУЮ ВЫСОКИХ КОНЦЕНТРАЦИЙ КИСЛОТ И ЩЕЛОЧЕЙ	EN ISO 10545-13		VALORE DICHIARATO DECLARED VALUE - ANGEGEBENER WERT VALEUR DÉCLARÉE - VALOR DECLARADO - ЗАЯВЛЕННОЕ ЗНАЧЕНИЕ	CONFORME COMPLYING - ERFÜLLT CONFORME - CONFORME COOTBETCTBYET		
	RESISTENZA AD ALTE CONCENTRAZIONI DI ACIDI E ALCALI RESISTANCE TO HIGH CONCENTRATIONS OF ACIDS AND ALKALI - BESTÄNDIGKEIT BEI HOHEN KONZENTRATIONEN VON SÄUREN UND LAUGEN - RESISTENCIA A ALTAS CONCENTRACIONES DE ÁCIDOS ET ALCALIS - RESISTENCIA A ALTAS CONCENTRACIONES DE ÁCIDOS Y ALCALIS - СТОЙКОСТЬ К ДЕЙСТВУЮ ВЫСОКИХ КОНЦЕНТРАЦИЙ КИСЛОТ И ЩЕЛОЧЕЙ	EN ISO 10545-13		VALORE DICHIARATO DECLARED VALUE - ANGEGEBENER WERT VALEUR DÉCLARÉE - VALOR DECLARADO - ЗАЯВЛЕННОЕ ЗНАЧЕНИЕ	CONFORME COMPLYING - ERFÜLLT CONFORME - CONFORME COOTBETCTBYET		
	RESISTENZA ALLE MACCHIE RESISTANCE TO STAINS - FLECKENBESTÄNDIGKEIT RESISTENCIA AUX TACHES - RESISTENCIA A LAS MANCHAS УСТОЙЧИВОСТЬ К ПЯТНАМ И ЗАГРЯЗНЕНИЯМ	EN ISO 10545-14		VALORE DICHIARATO DECLARED VALUE - ANGEGEBENER WERT VALEUR DÉCLARÉE - VALOR DECLARADO - ЗАЯВЛЕННОЕ ЗНАЧЕНИЕ	CONFORME COMPLYING - ERFÜLLT CONFORME - CONFORME COOTBETCTBYET		
	CESSIONE DI PIOMBO E CADMIO LEAD AND CADMIUM DISCHARGE - ABGABE VON BLEI UND CADMIUM PERTE DE PLOMB ET CADMIUM - CESIÓN DE PLOMO Y CADMIO ВЫДЕЛЕНИЕ СВИНЦА И КАДМИЯ	EN ISO 10545-15		VALORE DICHIARATO DECLARED VALUE - ANGEGEBENER WERT VALEUR DÉCLARÉE - VALOR DECLARADO - ЗАЯВЛЕННОЕ ЗНАЧЕНИЕ		< LIMITE D'INSTRUMENT < LIMITE DE INSTRUMENT - LIMITE DEL INSTRUMENTO < LIMITE DE INSTRUMENTO - LIMITE DEL INSTRUMENTO	
	SCIVOLOSITÀ SKID RESISTANCE - RUTSCHWERT GLEISSANCE - ADHERENCIA СКОЗЯЕМОСТЬ	DM 23689 BCRA ANSI A 137.1 DIN 51130 DIN 51007	> 0,40 WET COOF > 0,42 -	> 0,40 > 0,42 -		> 0,40 > 0,42 -	> 0,40 R10 -
					A+B Mos 4,7 A+B+C Mos 2,5		A+B+C

PER I CERTIFICATI SPECIFICI, E VALORI PUNTUALI, CONTATTARE FINCIBEC SPA - FOR SPECIFIC CERTIFICATES AND DATA, CONTACT FINCIBEC S.P.A. - FÜR SPEZIELLE ZERTIFIKATE UND PUNKTWERTE, FINCIBEC S.P.A. KONTAKTIEREN - POUR LES CERTIFICATS SPÉCIFIQUES ET LES VALEURS PONCTUELLES, CONTACTER FINCIBEC S.P.A. - PARA LOS CERTIFICADOS ESPECÍFICOS Y LOS VALORES CONCRETOS, CONTACTE CON FINCIBEC S.P.A. - ВО ВОПРОСАХ СПЕЦИАЛЬНЫХ СЕРТИФИКАТОВ И ПОКАЗАТЕЛЕЙ СВЯЖИТЕСЬ С FINCIBEC SPA.  
ESCLUSO PEZZI SPECIALI ED ELEMENTI DECORATIVI  
WITH THE EXCEPTION OF SPECIAL PIECES AND DECORS - A L'EXCEPTION DE PIÈCES SPÉCIALES ET ÉLÉMENTS DÉCORATIFS - AUSSCHLIEßLICH FORMSTÜCKE UND DEKORTEILE - EXCLUIDO PIEZAS ESPECIALES Y ELEMENTOS DECORATIVOS





**CENTURY**

Via Radici in Monte, 19 - 42014 Roteglia (RE) Italy  
Tel. +39 0536 855511  
Fax Italia +39 0536 851239  
Fax Export Dept. +39 0536 855541  
info@century-ceramica.it  
www.century-ceramica.it

**FINCIBEC S.p.A.**

Sede legale: Via Valle d'Aosta, 47 - 41049 - Sassuolo (Mo) Italy  
Gruppo Fire S.R.L.

**FINCIBEC USA Inc.**

420 Columbus Avenue, Valhalla NY 10595 – USA  
info@fincibecusa.com

FINCIBEC S.p.A. socio di:

