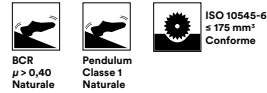


SistemT – Cromie

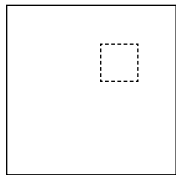
High performance

- Gres Fine Porcellanato Colorato in Massa • Colorbody Fine Porcelain Stoneware • Grès Cérame Fin Coloré dans la Masse • Durchgefärbtes Feinsteinzeug • Gres Porcelánico Fino Coloreado en Masa • Гомогенный мелкозернистый Керамогранит

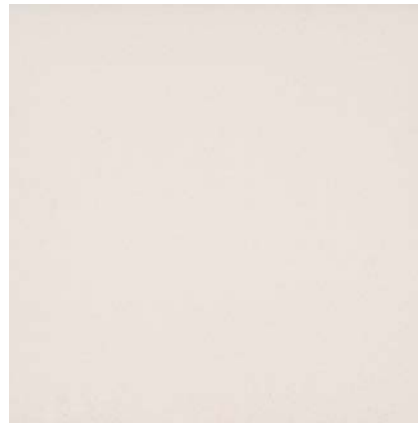
 **Naturale/Matt**
30x30



Conforme • According to • Conforme •
Gemäß • Conforme • Соответствует
UNI EN 14411 - G Bla



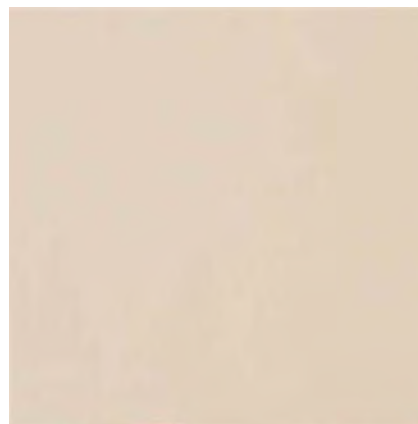
Porzione di piastrella fotografata al vero. • Full-scale reproduction of tile portion. • Portion de carreau photographiée à l'échelle 1/1. • Detail einer Fliese in Maßstab 1:1. • Porción de azulejo fotografiada a escala 1:1. • Участок Плитки, Сфотографированный Внатуральный Размер



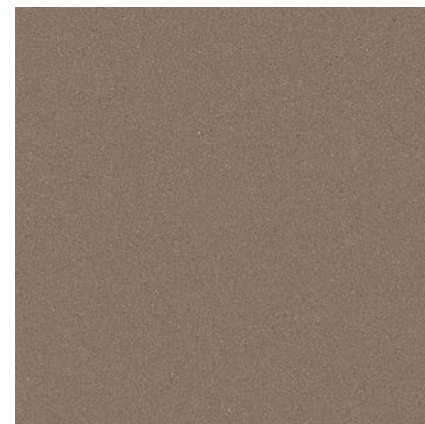
Bianco_C (Alabastro)



Grigio Chiaro_C (Ossidiana)



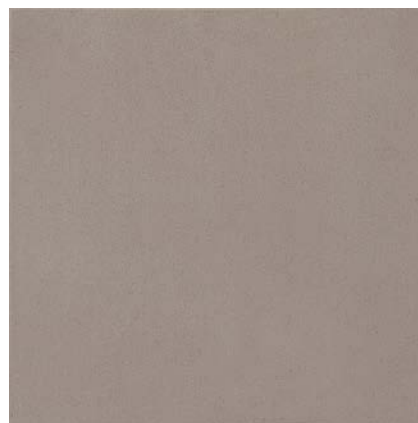
Panna_C (Opale)



Tortora_C



Antracite_C (Lavagna)



Grigio Medio_C (Fumo)



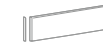
Cemento_C

Formati • Sizes • Formats •
Formate • Formatos • Форматы

Pezzi Speciali • Special Trims • Pièces
Spéciales • Formteile • Piezas Especiales •
Специальные Изделия



30x30



9,5x30 (6)
Battidcopa Bc



30x30
Gradino

Superfici • Surfaces • Surfaces
Oberflächen • Superficies • Поверхности

Naturale
R9 A

Naturale

Naturale

Spessore mm. • Thickness mm. •
Épaisseur mm. Stärke mm. •
Espesor mm. • Колщина mm

8,5

8,5

8,5

	Cromie Bianco_C (Alabastro)	MHMZ	MJAC	MJAT
	Cromie Grigio Chiaro_C (Ossidiana)	MHMM	MJ90	MJAF
	Cromie Grigio Medio_C (Fumo)	MRJM	MWKV	MWGH
	Cromie Cemento_C	M7LR	M7PZ	M7Q2
	Cromie Panna_C (Opale)	MRJF	MWKS	MWGE
	Cromie Tortora_C	M7LX	M7P4	M7Q7
	Cromie Antracite_C (Lavagna)	MRJP	MWKW	MWGJ

	Pezzi/Sc. - Pcs/Box	15	30	15
	Mq/Sc. - Sq.m/Box	1,35	9 ml	1,35
	Kg/Sc. - Kg/Box	25,61	16,29	25,35
	Sc./Pal. - Box/Pal	40	-	-
	Mq/Pal. - Sq.m/Pal	54,00	-	-
	Kg/Pal. - Kg/Pal	1.024,80	-	-