

Métallique

**Minimal,
contemporary
allure.**



KRONOS

CERAMICHE

Métallique

**Minimal,
contemporary
allure.**

Métallique

-  **BRUNE** P06
-  **NOIR** P14
-  **LAME** P24



OXYDE

NOIR

Métallique

BRUNE



BRUNE. PRECIEUSE INTENSITE



Métallique



BRUNE

Métallique



BRUNE



Métallique



BRUNE

WALL brune oxydé 120x280 - asta ottone 0,5x3x280 - porfido . DESK brune tranché 60x120 . FLOOR porfido 60x120

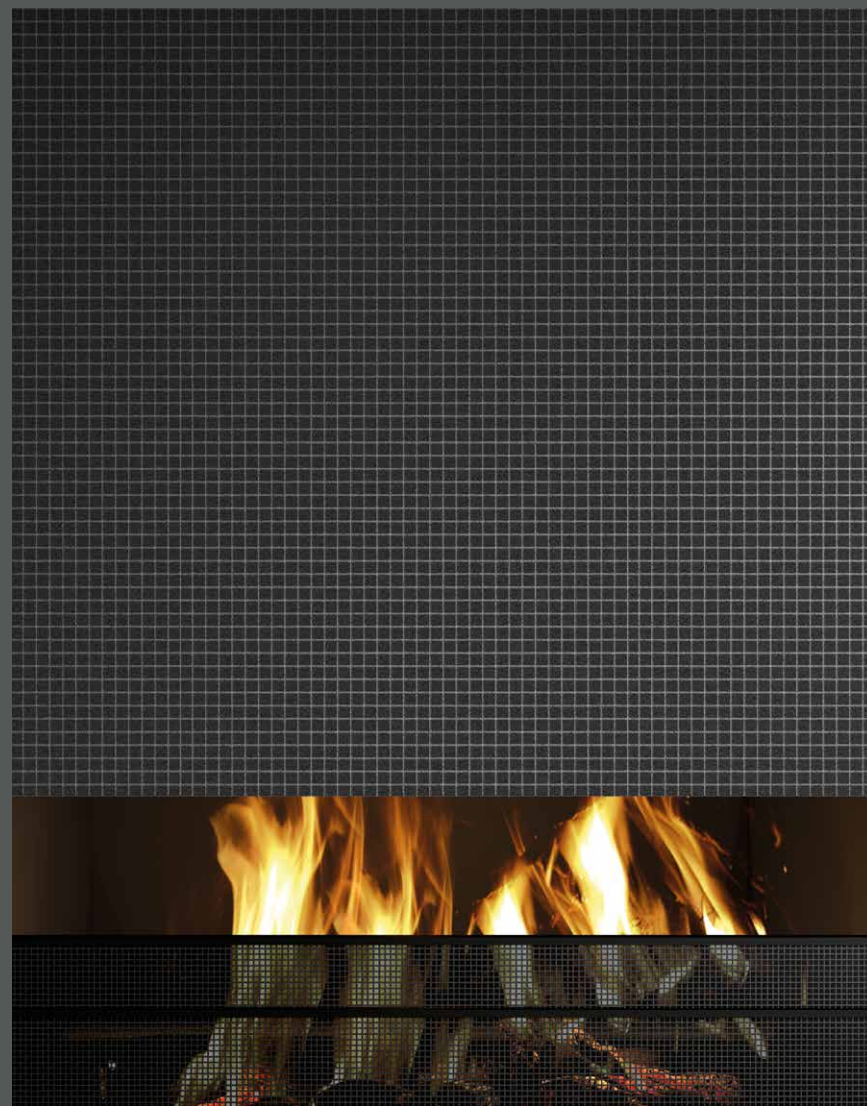
Métallique

NOIR



NOIR. DESIR SECRET.

Métallique



NOIR



Métallique



NOIR

Métallique



NOIR



Métallique

NOIR



Métallique

LAME



LAME. LUMINOSITE DIFFUSE.



Métallique



LAME

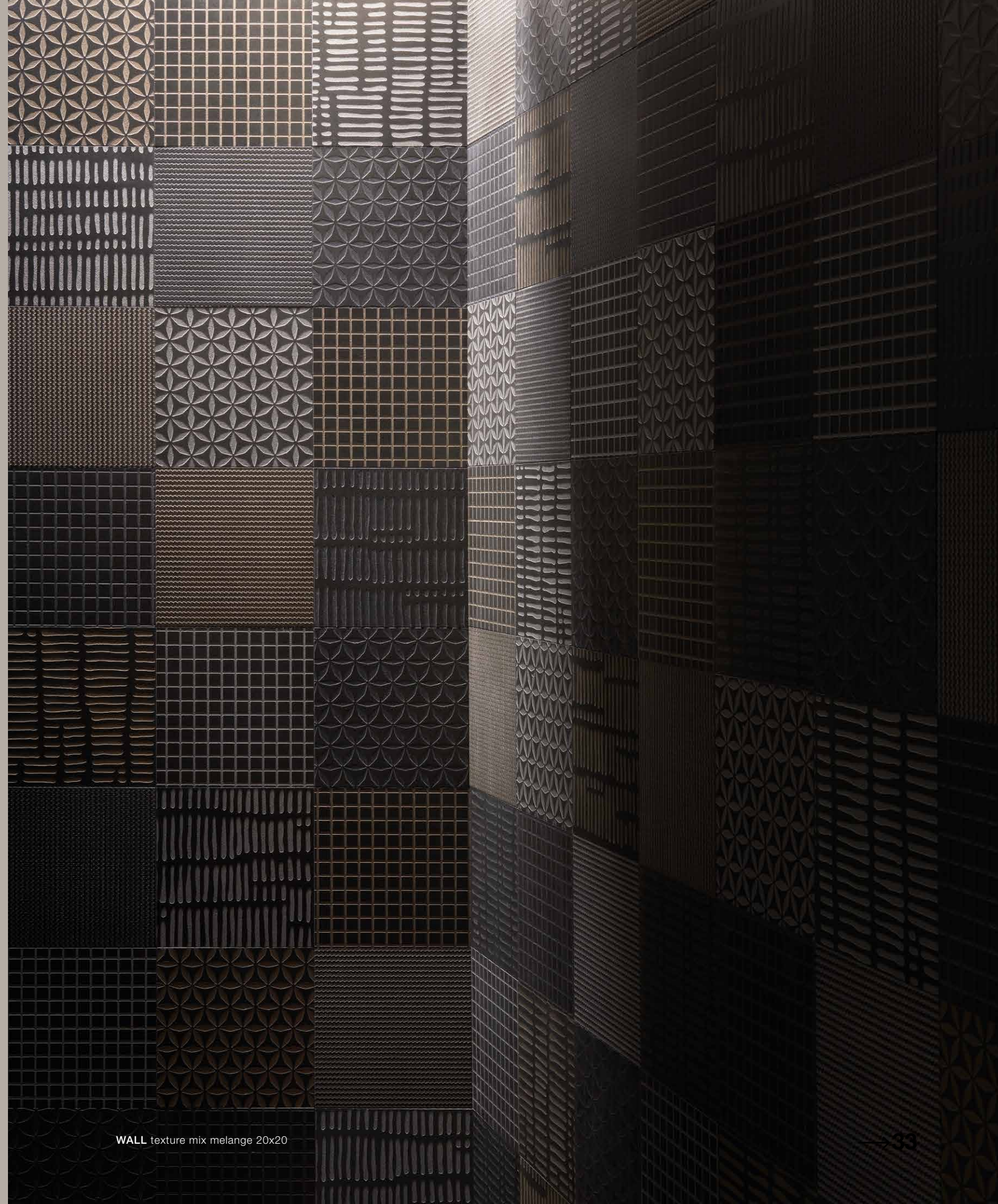


Métallique



LAME

Métallique



Métallique



6 mm - ¼"



ME003 BRUNE rett
120x280 - 47¼"x110½"



ME056 ASTA OTTONE
0,5x3x280 - 0,2"x1,1"x110½"



ME055 ASTA FERRO
0,5x3x280 - 0,2"x1,1"x110½"

10 mm - ⅜"



ME022 BRUNE rett
60x120 - 23⅝"x47¼"



ME033 BRUNE batt.
4,60x60 - 1⅞"x23⅝"

6 mm - ¼"



ME007 BRUNE OXYDE rett
120x280 - 47¼"x110½"

10 mm - ⅜"



ME017 BRUNE OXYDE rett
120x120 - 47¼"x47¼"



ME027 BRUNE OXYDE rett
60x120 - 23⅝"x47¼"



ME087 BRUNE OXYDE rett
80x80 - 31½"x31½"

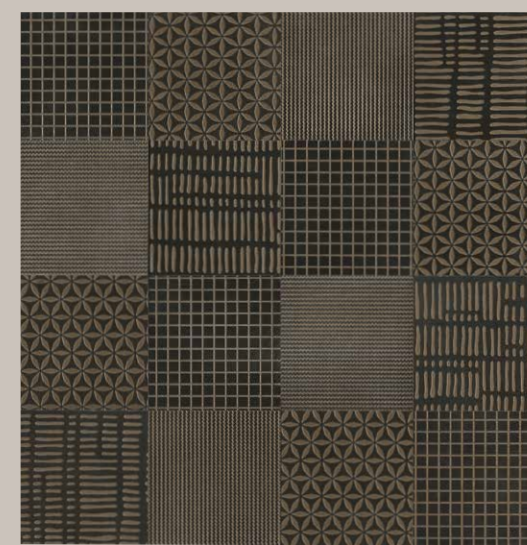
Decori e mosaici abbinabili a brune e brune oxyde.
Decors and mosaics can be combined with brune and brune oxyde.



ME062 ETNIQUE BRUNE rett
60x120 - 23⅝"x47¼"



ME072 CARRE BRUNE rett
60x120 - 23⅝"x47¼"



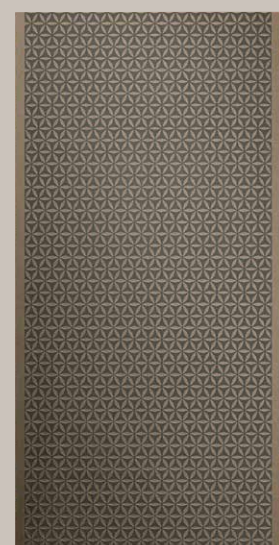
ME042 TEXTURE MIX BRUNE rett
20x20 - 7⅞"x 7⅞"



ME047 MOSAICO BRUNE
30x30 - 11⅞"x11⅞"



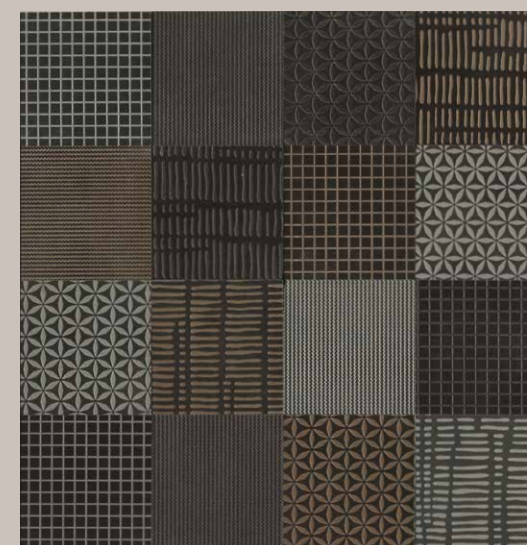
ME082 HEXA BRUNE
31,1x32,2 - 12⅜"x12⅜"



ME067 CELTIQUE BRUNE rett
60x120 - 23⅝"x47¼"



ME077 TRANCHE BRUNE rett
60x120 - 23⅝"x47¼"



ME044 TEXTURE MIX MELANGE rett
20x20 - 7⅞"x 7⅞"

6 mm - ¼"



ME001 NOIR rett
120x280 - 47¼"x110½"



ME056 ASTA OTTONE
0,5x3x280 - 0,2"x1,1"x110½"



ME055 ASTA FERRO
0,5x3x280 - 0,2"x1,1"x110½"

6 mm - ¼"



ME005 NOIR OXYDE rett
120x280 - 47¼"x110½"

10 mm - ⅜"



ME020 NOIR rett
60x120 - 23¾"x47¼"



ME030 NOIR batt.
4,60x60 - 1⅞"x23¾"

10 mm - ⅜"



ME015 NOIR OXYDE rett
120x120 - 47¼"x47¼"



ME025 NOIR OXYDE rett
60x120 - 23¾"x47¼"



ME085 NOIR OXYDE rett
80x80 - 31½"x31½"

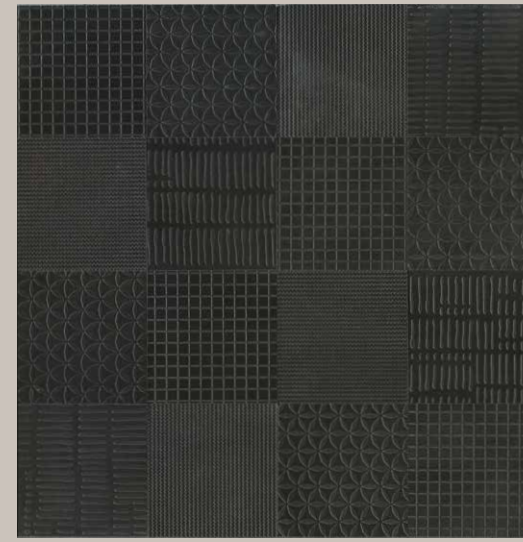
Decori e mosaici abbinabili a noir e noir oxyde.
Decors and mosaics can be combined with noir and noir oxyde.



ME060 ETNIQUE NOIR rett
60x120 - 23¾"x47¼"



ME070 CARRE NOIR rett
60x120 - 23¾"x47¼"



ME040 TEXTURE MIX NOIR rett
20x20 - 7⅞"x 7⅞"



ME045 MOSAICO NOIR
30x30 - 11⅞"x11⅞"



ME080 HEXA NOIR
31,1x32,2 - 12¾"x12¾"



ME065 CELTIQUE NOIR rett
60x120 - 23¾"x47¼"



ME075 TRANCHE NOIR rett
60x120 - 23¾"x47¼"



ME044 TEXTURE MIX MELANGE rett
20x20 - 7⅞"x 7⅞"

6 mm - ¼"



ME002 LAME rett
120x280 - 47¼"x110½"



ME056 ASTA OTTONE
0,5x3x280 - 0,2"x1,1"x110½"



ME055 ASTA FERRO
0,5x3x280 - 0,2"x1,1"x110½"

6 mm - ¼"



ME006 LAME OXYDE rett
120x280 - 47¼"x110½"

10 mm - ⅜"



ME021 LAME rett
60x120 - 23⅝"x47¼"



ME031 LAME batt.
4,60x60 - 1⅞"x23⅝"

10 mm - ⅜"



ME016 LAME OXYDE rett
120x120 - 47¼"x47¼"

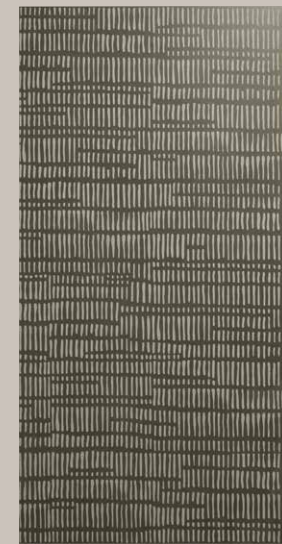


ME026 LAME OXYDE rett
60x120 - 23⅝"x47¼"

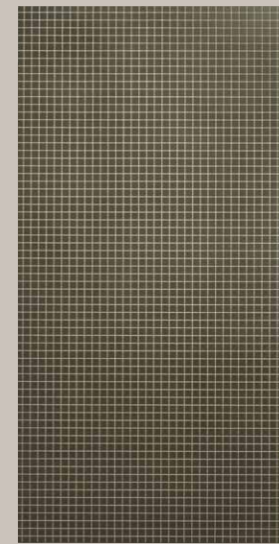


ME086 LAME OXYDE rett
80x80 - 31½"x31½"

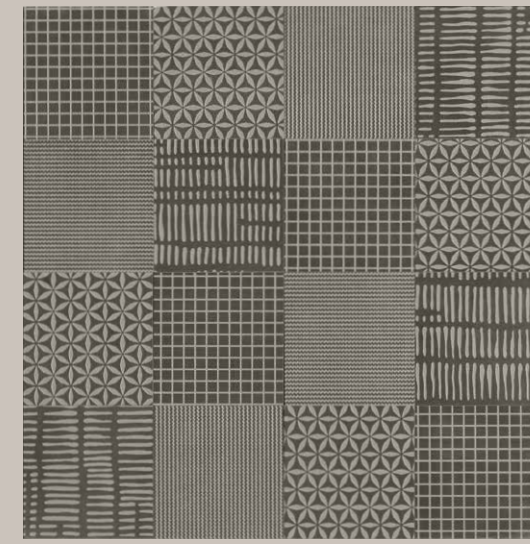
Decori e mosaici abbinabili a lame e lame oxyde.
Decors and mosaics can be combined with lame and lame oxyde.



ME061 ETNIQUE LAME rett
60x120 - 23⅝"x47¼"



ME071 CARRE LAME rett
60x120 - 23⅝"x47¼"



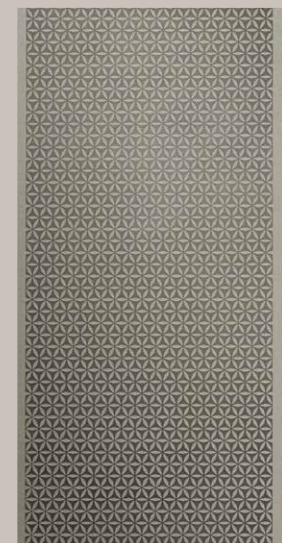
ME041 TEXTURE MIX LAME rett
20x20 - 7⅞"x 7⅞"



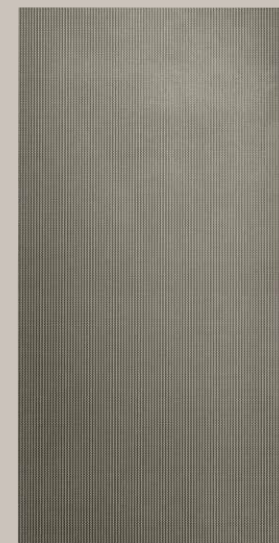
ME046 MOSAICO LAME
30x30 - 11⅞"x11⅞"



ME081 HEXA LAME
31,1x32,2 - 12⅝"x12¾"



ME066 CELTIQUE LAME rett
60x120 - 23⅝"x47¼"



ME076 TRANCHE LAME rett
60x120 - 23⅝"x47¼"




ME044 TEXTURE MIX MELANGE rett
20x20 - 7⅞"x 7⅞"

Métallique


IMBALLI_PACKAGING_EMBALLAGES_VERPACKUNGEN

METALLIQUE	Thickness	Pezzi per scatola	M ² per scatola	Kg per scatola	Scatole per pallet	M ² per pallet	KG per pallet
120x280 - 47¼"x110½"	6	1	3,36	47,40	20	67,20	968
120x120 - 47¼"x47¼"	10	2	2,88	67,00	18	51,84	1.226
80x80 - 31½"x31½"	10	2	1,28	30,00	40	51,20	1.220
60x120 - 23¾"x47¼"	10	2	1,44	33,50	30	43,20	1.025
30x30 - mosaico tessere	10	10	0,90	20,20	30	27,00	626
32,2x31,1 mosaico hexa	10	9	1,00	29,00	36	36,00	1.064

VARIAZIONE CROMATICA_SHADE VARIATION_VARIATION CHROMATIQUE_CHROMATISCHE ABWEICHUNG

 V1 aspetto uniforme uniform appearance aspect uniforme Gleichmäßiges Bild	 V2 lieve variazione slight variation légère différence de nuance Leichte Abweichung	 V3 moderata variazione moderate variation variation modérée Mäßige Abweichung	 V4 forte variazione substantial variation variation intense Stärke Abweichung
--	--	--	--

METALLIQUE

CARATTERISTICHE E PROPRIETÀ CHARACTERISTICS OR PROPERTIES CARACTERISTIQUES OU PROPRIETES EIGENSCHAFTEN UND GÜTEMERKMALE	NORME STANDARDS NORMES NORMEN	SECONDO LE NORME COMPLIANCE WITH STANDARDS CONFORME AUX NORMES ENTSPRECHEND DEN NORMEN UNI EN 14411 G	
QUALITÀ DELLA SUPERFICIE - SURFACE QUALITY QUALITE DE LA SURFACE - OBERFLAECHEQUALITAET		IL 95% MIN DELLE PISTRELLE DEVE ESSERE ESENTE DA DIFETTI VISIBILI / AT LEAST 95% OF THE TILES MUST BE FREE FROM VISIBLE FLAWS / 95% MIN DES CARREUX NE DOIVENT PRESENTER AUCUN DÉFAUT VISIBLE / MINDESTENS 95% DER FLIESEN MÜSSEN FREI VON SICHTBAREN	CONFORME ALLE NORME - COMPLIES WITH STANDARD - CONFORME AUX NORMES - NORMGERECHT
DEVIAZIONE MASSIMA DI RETTILINEITÀ IN % - MAXIMUM STRAIGHTNESS DEVIATION IN % - MARGE DE TOLERANCE DE RECTITUDE EN % - ZULAESSIGE HOECHSTABWEICHUNG DER KANTENGERADHEIT IN PROZENTEN		± 0,3 %	± 0,1 %
DEVIAZIONE AMMISSIBILE IN %, DELLO SPESSORE MEDIO DI OGNI PIASTRELLA DALLA DIMENSIONE DI FABBRICAZIONE - ADMITTED DEVIATION, IN %, OF THE AVERAGE THICKNESS OF EACH TILE FROM THE PRODUCTION DIMENSIONS - MARGE DE TOLERANCE, EN POURCENTAGE, ENTRE L'EPAISSEUR MOYENNE DE CHAQUE CARREAU ET LA DIMENSION DE FABRICATION - ZULÄSSIGE ABWEICHUNG DER DURCHSCHNITTSDICKE JEDER FLIESE VOM HERSTELLMASS IN PROZENTEN	ISO 10545-2	± 5 %	± 5 %
DEVIAZIONE MASSIMA DI ORTOGONALITÀ IN % - MAXIMUM RIGHT-ANGLE DEVIATION IN % - MARGE DE TOLERANCE D'ANGULARITE IN % - HOECHSTABWEICHUNG DER RECHTWINKLIGKEIT IN PROZENTEN		± 0,3 %	± 0,2 %
PLANARITÀ - FLATNESS - PLANEITE - EBENFLAECHEIGKEIT		± 0,4 %	± 0,2 %
LUNGHEZZA E LARGHEZZA - LENGTH AND WIDTH LONGUEUR ET LARGEUR - LANGE UND BREITE		± 0,3 %	± 0,15 %
ASSORBIMENTO D' ACQUA - WATER ABSORPTION ABSORPTION D'EAU - WASSERAUFNAHME	ISO 10545-3	≤ 0,5 %	average value 0,08%
RESISTENZA ALLA FLESSIONE - BENDING STRENGTH RESISTANCE À LA FLEXION - BIEGEZUGFESTIGKEIT	ISO 10545-4	R ≥ 35 N/mm²	average value 52 N/mm²
RESISTENZA ALL'URTO - IMPACT RESISTANCE RESISTANCE AUX CHOCS - SCHLAGFESTIGKEIT	ISO 10545-5	VALORE DICHIARATO - DECLARED VALUE VALEUR DECLAREE - ANGEGBENER WERT	0,88
RESISTENZA ALL'ABRASIONE PROFONDA - RESISTANCE TO DEEP ABRASION RESISTANCE A L'ABRASION PROFONDE - WIDERSTÄNDSFAKIGKEIT GEGEN TIEFENABRIEB	ISO 10545-6	≤175 mm³	<128 mm³
COEFF. DI DILATAZIONE TERMICA LINEARE - COEFFICIENT OF LINEAR THERMAL-EXPANSION - COEFF. D'EXTENSION THERMIQUE LINEAIRE - LINEAR WÄRMEAUDEHNUNGS-KOEFFIZIENT	ISO 10545-8	-	α=7x10 ⁻⁶ /°C ⁻¹
RESISTENZA AGLI SBALZI TERMICI - THERMAL SHOCK RESISTANCE RESISTANCE AUX ECARTS THERMIQUES - TEMPERATURWECHSELBESTÄNDIGKEIT	ISO 10545-9	TEST SUPERATO SECONDO EN ISO 10545-1 PASS ACCORDING EN ISO 10545-1 TEST OBTENUS SELON EN ISO 10545-1 TEST LAUT EN ISO 10545-1 BESTANDEN	NESSUN DANNO - NO DAMAGE - AUCUN DOMMAGE - KEIN SCHADEN
RESISTENZA AL GELO - FROST RESISTANCE RESISTANCE AU GEL - FROSTBESTÄNDIGKEIT	ISO 10545-12	TEST SUPERATO SECONDO EN ISO 10545-1 PASS ACCORDING EN ISO 10545-1 TEST OBTENUS SELON EN ISO 10545-1 TEST LAUT EN ISO 10545-1 BESTANDEN	NESSUN DANNO - NO DAMAGE - AUCUN DOMMAGE - KEIN SCHADEN
RESISTENZA AGLI AGENTI CHIMICI - CHEMICAL RESISTANCE RESISTANCE A L'ATTAQUE CHIMIQUE - BASTÄNDIGKEIT GEGEN CHEMIKALIEN	ISO 10545-13	UB MIN.	UA - UBL - UHB
RESISTENZA ALLE MACCHIE - RESISTANCE TO STAIN RESISTANCE AUX TACHES - FLECKENFESTIGKEIT	ISO 10545-14	VALORE DICHIARATO - DECLARED VALUE VALEUR DECLAREE - ANGEGBENER WERT	Classe 5
RESISTENZA AL FUOCO - FIRE RESISTANCE RESISTANCE AU FEU - FEUERWIDERSTAND	EN 13501 - 1	VALORE DICHIARATO - DECLARED VALUE VALEUR DECLAREE - ANGEGBENER WERT	CLASSE A1 - A1 FL
RESISTENZA ALLO SCIVOLAMENTO - SLIP RESISTANCE RESISTANCE AU GLISSEMENT - BESTIMMUNG DER RUSTCHEMMENDE EIGENSCHAFT	B.C.R. C.A. B.C.R. G.B D. M. 236 DEL 4.6 1989	> 0,40	CONF
	ASTM C 1028/07 BOT 3000	Dry SCOF > 0,60	CONF
	ASTM C 1028/07 BOT 3000	Wet SCOF > 0,60	CONF
	ANSI A137.1 BOT 3000	Wet DCOF > 0,42	CONF
	DIN 51130	-	R9
	ENV 12633	≥ CL 1	CONF
UNI EN 13036 - 4 2011	≥ 36	CONF	
STABILITÀ DEI COLORI ALLA LUCE E AI RAGGI U.V. COLOUR STABILITY ON EXPOSURE TO LIGHT AND UV RAYS STABILITE DES COULEURS A LA LUMIERE ET AUX RAYONS U.V. FARBECHEITHIT UNTER LICHTEINLUSS UND UV-STRAHLUNG	DIN 51094	VALORE DICHIARATO - DECLARED VALUE - VALEUR DECLAREE - ANGEGBENER WERT	CONFORME ALLE NORME, NO VARIAZIONI COMPLIES WITH STANDARD, NO VARIATION CONFORME AUX NORMES, PAS DE CHANGEMENTS NORMGERECHT, KEINE AENDERUNG

Métallique





Kronos 2 ceramiche S.p.A.

Sede legale: Strada delle Fornaci, 20 41126 Modena Italy
Sede amministrativa: Via Giardini, 62 41042 Fiorano Modenese (Mo) Italy
tel. +39 0536 927711 - info@kronosceramiche.com
www.kronosceramiche.com

