



TRADITION

— Gres Fine Porcellanato —

★★★★★
MONOCIBEC[®]
FINCIBEC GROUP

TRADITION

concept

Tradition interpreta con stile alcuni dei materiali naturali più nobili ed eleganti, impiegati ormai da secoli per arredare finemente i luoghi della quotidianità. Tra le suggestive colorazioni spicca il calore avvolgente delle varianti Bourgogne e Travertin Beige, mentre la matericità della collezione emerge nettamente dalle sofisticate Pierre Bleue e Pierre Grise.

La bellezza naturale e senza tempo caratterizza le superfici Tradition rendendole ideali e versatili, per vestire ambienti dal gusto classico, di ispirazione moderna o dall'essenza dichiaratamente contemporanea.

La materia ceramica è plasmata con l'utilizzo delle più evolute tecnologie produttive; grazie alla vasta offerta di formati e alle tre finiture, naturale, lappata e grip, Tradition costituisce la soluzione perfetta per progettare spazi residenziali e commerciali, interni ed esterni.

Tradition is a stylish interpretation of some of our finest natural materials, used for centuries to enhance the spaces we live and work in. The striking colours include the warmth of the Bourgogne and Travertin Beige variants, while the materiality of the collection is brought out by the sophisticated Pierre Bleue and Pierre Grise.

Timeless natural beauty is the distinguishing characteristic of Tradition surfaces, whose versatility makes them ideal choices for environments inspired by classical or modern tastes, as well as for overtly contemporary preferences.

The ceramic material is worked with cutting-edge production technologies; thanks to the wide range of formats and three different finishes, natural, lapped and grip, Tradition is the perfect solution for the design of indoor and outdoor residential and business spaces.



PAG. **6**

BOURGOGNE



PAG. **12**

TRAVERTIN BEIGE



PAG. **20**

PIERRE GRISE



PAG. **28**

PIERRE BLEUE



CERAMICA OGGI E PER SEMPRE
ceramics today and forever

★★★★★
MONOCIBEC[®]
FINCIBEC GROUP

Il gres porcellanato non teme confronti per le caratteristiche tecniche che lo rendono superiore a tutti i materiali esistenti e per le qualità estetiche che consentono la più ampia libertà espressiva. Per questo, per bellezza e per forza la ceramica è oggi la scelta vincente.



TRANQUILLITÀ DI UN'IGIENE SICURA
HIGIENICALLY SAFE



ANALLERGENICO
HYPOALLERGENIC



RESISTENZA AL GELO
FROST RESISTANCE



PULIBILE CON ACQUA
EASY TO CLEAN WITH WATER



ECOSOSTENIBILE
ECO-FRIENDLY



IMPERMEABILE
WATERPROOF



RESISTENZA DEI COLORI ALLA LUCE
LIGHT STABILITY



IGNIFUGO
FIREPROOF



RESISTENZA ALL'ATTACCO CHIMICO
CHEMICAL RESISTANCE



RESISTENZA ALLA FLESSIONE
FLEXION RESISTANCE



COEFFICIENTE D'ATTRITO
FRICTION COEFFICIENT



RESISTENZA ALLE MACCHIE
STAIN RESISTANCE

Porcelain stoneware does not fear comparisons in terms of technical characteristics that make it superior to all existing materials, and aesthetic qualities that allow the widest freedom of expression. For this reason, ceramics are currently the best choice in terms of beauty and strength.

GRES FINE PORCELLANATO
Fine porcelain stoneware

TRADITION

colori - colours



BOURGOGNE



TRAVERTIN BEIGE



PIERRE GRISE



PIERRE BLEUE

formati - sizes



spessore - thickness



superfici - surfaces

NATURALE - NATURAL

120x120 cm 47"x47"	60x120 cm 24"x47"	80x80 cm 31,5"x31,5"	60x60 cm 24"x 24"	30x60 cm 12"x24"	30x30 cm 12"x12"	10x30 cm 4"x12"
-----------------------	----------------------	-------------------------	----------------------	---------------------	---------------------	--------------------

MOLATA | BRUSHED

120x120 cm 47"x47"	60x120 cm 24"x47"	80x80 cm 31,5"x31,5"	60x60 cm 24"x 24"	30x60 cm 12"x24"	30x30 cm 12"x12"
-----------------------	----------------------	-------------------------	----------------------	---------------------	---------------------

GRIP | GRIP Bourgogne - Travertin Beige - Pierre Grise

60x60 cm 24"x 24"	30x60 cm 12"x24"	30x30 cm 12"x12"
----------------------	---------------------	---------------------

GRIP | GRIP MAJOR Bourgogne - Travertin Beige

50x100 cm 20"x 40"

bordi - edges

NATURALE - NATURAL RETTIFICATO - RECTIFIED

50x100 cm 20"x40" MAJOR	10x30 cm 4"x12"	120x120 cm 47"x47"	60x120 cm 24"x47"	50x100 cm 20"x40" MAJOR	80x80 cm 31,5"x31,5"	60x60 cm 24"x 24"	30x60 cm 12"x24"	30x30 cm 12"x12"
-------------------------------	--------------------	-----------------------	----------------------	-------------------------------	-------------------------	----------------------	---------------------	---------------------

BOURGOGNE





Ambiente realizzato con Tradition Bourgogne
Setting realized with Tradition Bourgogne

80x80 cm - 31,5"x31,5" Mol. Rett.
60x60 cm - 24"x24" Grip Rett.
30x60 cm - 12"x24" Grip Rett.
30x30 cm - 12"x12" Grip Rett.



TRADITION
bourgogne

TRAVERTIN BEIGE





Ambiente realizzato con Tradition Travertin Beige
Setting realized with Tradition Travertin Beige

60x120 cm - 24"x47" Mol. Rett.
60x60 cm - 24"x24" Mol. Rett.
30x60 cm - 12"x24" Mol. Rett.
60x60 cm - 24"x24" Grip Rett.



TRADITION
travertin beige



TRADITION
MAJOR 20mm travertin beige

PIERRE GRISE





Ambiente realizzato con Tradition Pierre Grise
Setting realized with Tradition Pierre Grise

120x120 cm - 47"x 47" Mol. Rett.



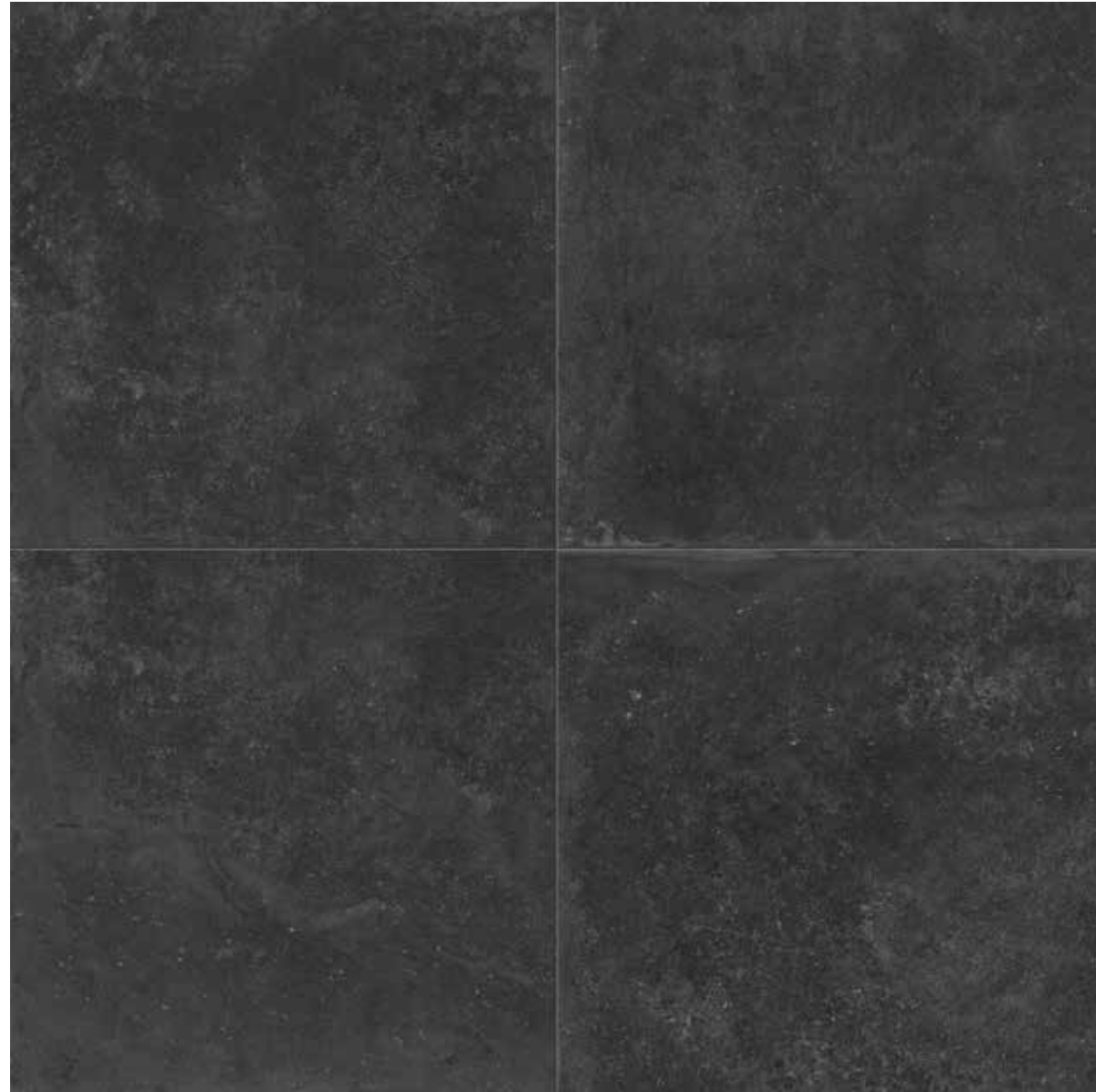
TRADITION
pierre grise



Ambiente realizzato con Tradition Pierre Grise
Setting realized with Tradition Pierre Grise

30x30 cm - 12"x12" Grip Rett.
30x60 cm - 12"x24" Grip Rett.
60x60 cm - 24"x24" Grip Rett.

PIERRE BLEUE





Ambiente realizzato con Tradition Pierre Bleue
Setting realized with Tradition Pierre Bleue

80x80 cm - 31,5"x31,5" Nat. Rett.



TRADITION
pierre bleue

TRADITION

spessore - thickness  9 mm/20 mm

bourgogne



120x120 cm - 47"x 47"
113063 Nat. Rett.
 ■ 127
113069 Mol. Rett.
 ■ 163



60x120 cm - 24"x 47"
113076 Nat. Rett.
 ■ 93
113081 Mol. Rett.
 ■ 109



MAJOR 20 mm
 50x100 cm - 20"x 40"
124265 Grip.
 ■ 133
124267 Grip. Rett.
 ■ 151



80x80 cm - 31,5"x 31,5"
113088 Nat. Rett.
 ■ 93
113177 Mol. Rett.
 ■ 109



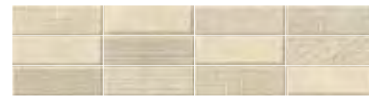
60x60 cm - 24"x 24"
113185 Nat. Rett.
 ■ 69
113190 Mol. Rett.
 ■ 83
113797 Grip Rett.
 ■ 69



30x60 cm - 12"x 24"
113198 Nat. Rett.
 ■ 63
113203 Mol. Rett.
 ■ 73
113799 Grip Rett.
 ■ 63



30x30 cm - 12"x12"
114987 Nat. Rett.
 ■ 73
114995 Mol. Rett.
 ■ 83
114187 Grip Rett.
 ■ 73



10x30 cm - 4"x12"
 Mattoncino
113862 Nat.
 ■ 163



Mosaico su rete
 4,7x4,7 cm - 1,8"x1,8"
 30x30 cm - 12"x12"
114106 Nat. Rett.
 ■ 253



Mosaico su foglio
 2,5x2,5 cm - 1"x 1"
 30x30 cm - 12"x12"
115676 Nat. Rett.
 ■ 297

pierre grise



120x120 cm - 47"x 47"
115121 Nat. Rett.
 ■ 127
115122 Mol. Rett.
 ■ 163



60x120 cm - 24"x 47"
115123 Nat. Rett.
 ■ 93
115124 Mol. Rett.
 ■ 109



80x80 cm - 31,5"x 31,5"
115125 Nat. Rett.
 ■ 93
115126 Mol. Rett.
 ■ 109



60x60 cm - 24"x 24"
115127 Nat. Rett.
 ■ 69
115143 Mol. Rett.
 ■ 83
115155 Grip Rett.
 ■ 69



30x60 cm - 12"x 24"
115144 Nat. Rett.
 ■ 63
115145 Mol. Rett.
 ■ 73
115177 Grip Rett.
 ■ 63



30x30 cm - 12"x12"
115148 Nat. Rett.
 ■ 73
115149 Mol. Rett.
 ■ 83
8 Grip Rett.
 ■ 73



10x30 cm - 4"x12"
 Mattoncino
115208 Nat.
 ■ 163



Mosaico su rete
 4,7x4,7 cm - 1,8"x1,8"
 30x30 cm - 12"x12"
115208 Nat. Rett.
 ■ 253



Mosaico su foglio
 2,5x2,5 cm - 1"x 1"
 30x30 cm - 12"x12"
115677 Nat. Rett.
 ■ 297

travertin beige

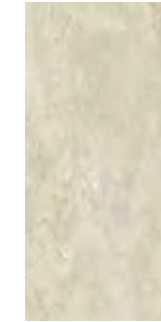
spessore - thickness  9 mm/20 mm



120x120 cm - 47"x 47"
113064 Nat. Rett.
 ■ 127
113072 Mol. Rett.
 ■ 163



60x120 cm - 24"x 47"
113077 Nat. Rett.
 ■ 93
113084 Mol. Rett.
 ■ 109



MAJOR 20 mm
 50x100 cm - 20"x 40"
124264 Grip.
 ■ 133
124266 Grip. Rett.
 ■ 151



80x80 cm - 31,5"x 31,5"
113173 Nat. Rett.
 ■ 93
113178 Mol. Rett.
 ■ 109



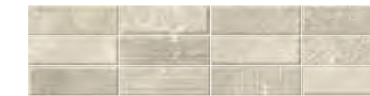
60x60 cm - 24"x 24"
113186 Nat. Rett.
 ■ 69
113191 Mol. Rett.
 ■ 83
113798 Grip Rett.
 ■ 69



30x60 cm - 12"x 24"
113199 Nat. Rett.
 ■ 63
113204 Mol. Rett.
 ■ 73
113800 Grip Rett.
 ■ 63



30x30 cm - 12"x12"
114783 Nat. Rett.
 ■ 73
114992 Mol. Rett.
 ■ 83
114188 Grip Rett.
 ■ 73



10x30 cm - 4"x12"
 Mattoncino
113863 Nat.
 ■ 163

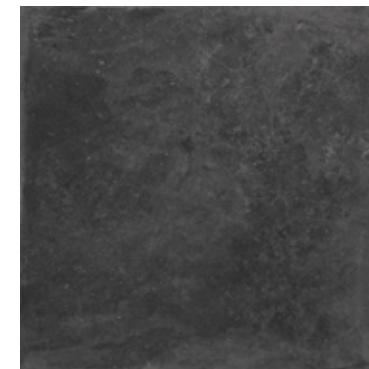


Mosaico su rete
 4,7x4,7 cm - 1,8"x1,8"
 30x30 cm - 12"x12"
114107 Nat. Rett.
 ■ 253



Mosaico su foglio
 2,5x2,5 cm - 1"x 1"
 30x30 cm - 12"x12"
115675 Nat. Rett.
 ■ 297

pierre bleue



120x120 cm - 47"x 47"
113066 Nat. Rett.
 ■ 127
113074 Mol. Rett.
 ■ 163



60x120 cm - 24"x 47"
113079 Nat. Rett.
 ■ 93
113086 Mol. Rett.
 ■ 109



80x80 cm - 31,5"x 31,5"
113175 Nat. Rett.
 ■ 93
113180 Mol. Rett.
 ■ 109



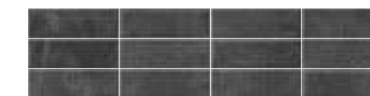
60x60 cm - 24"x 24"
113188 Nat. Rett.
 ■ 69
113196 Mol. Rett.
 ■ 83



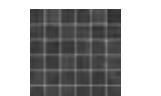
30x60 cm - 12"x 24"
113201 Nat. Rett.
 ■ 63
113208 Mol. Rett.
 ■ 73



30x30 cm - 12"x12"
114990 Nat. Rett.
 ■ 73
114996 Mol. Rett.
 ■ 83



10x30 cm - 4"x12"
 Mattoncino
113864 Nat.
 ■ 163



Mosaico su rete
 4,7x4,7 cm - 1,8"x1,8"
 30x30 cm - 12"x12"
114108 Nat. Rett.
 ■ 253

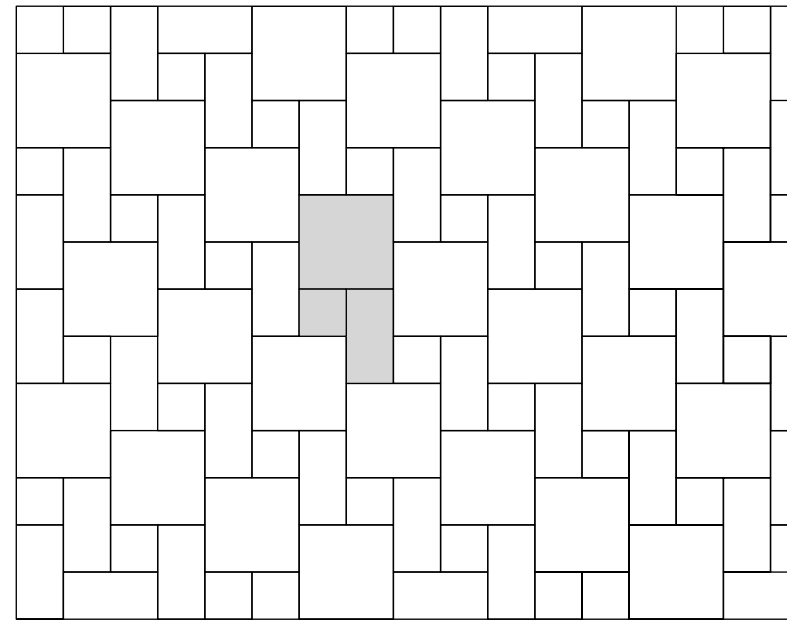
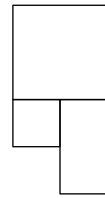
★★★★★
MONOCIBEC
 FINCIBEC GROUP

GRES FINE PORCELLANATO
 Fine porcelain stoneware

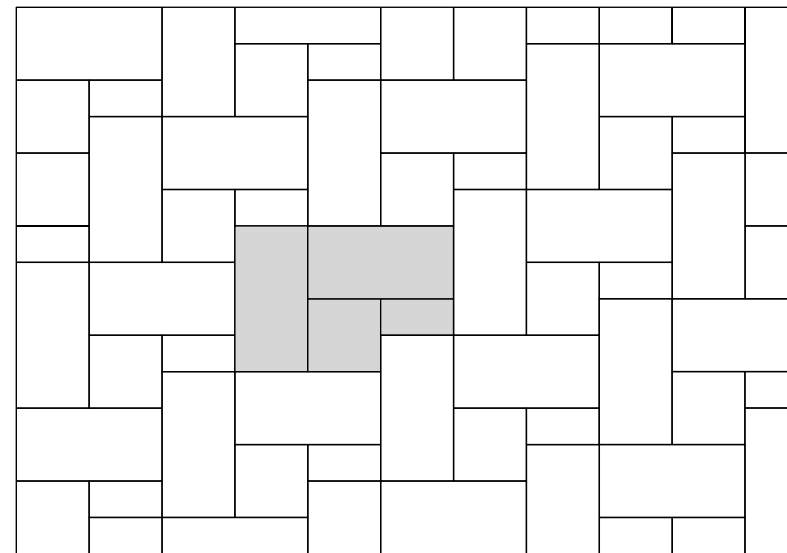
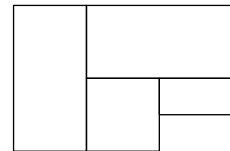
TRADITION

scemi di posa - Laying patterns

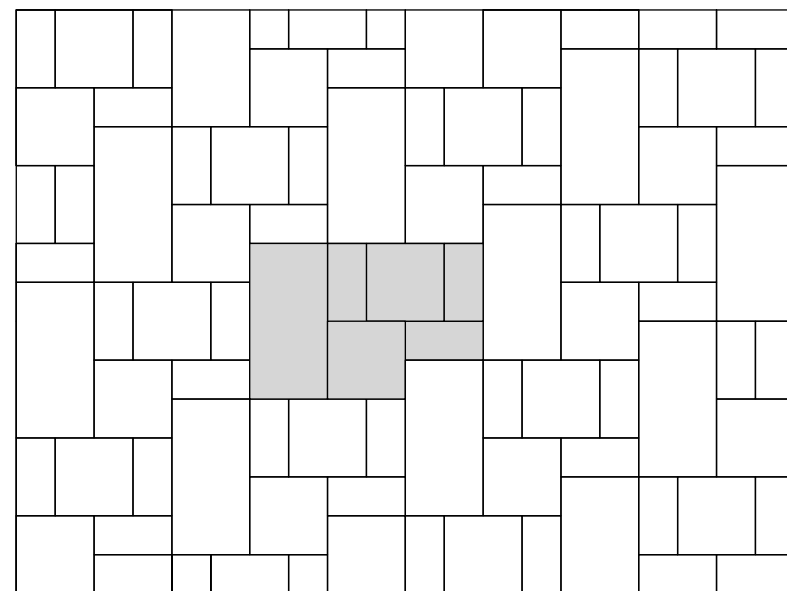
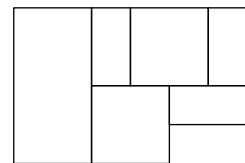
Formato	Pz	Pz. per Mq.	% per Mq
60x60	1	1,59	57,1 %
30x60	1	1,59	28,6 %
30x30	1	1,59	14,3 %



Formato	Pz	Pz. per Mq.	% per Mq
60x60	1	0,51	18,2 %
30x60	1	0,51	9,1 %
60x120	2	1,01	72,7 %

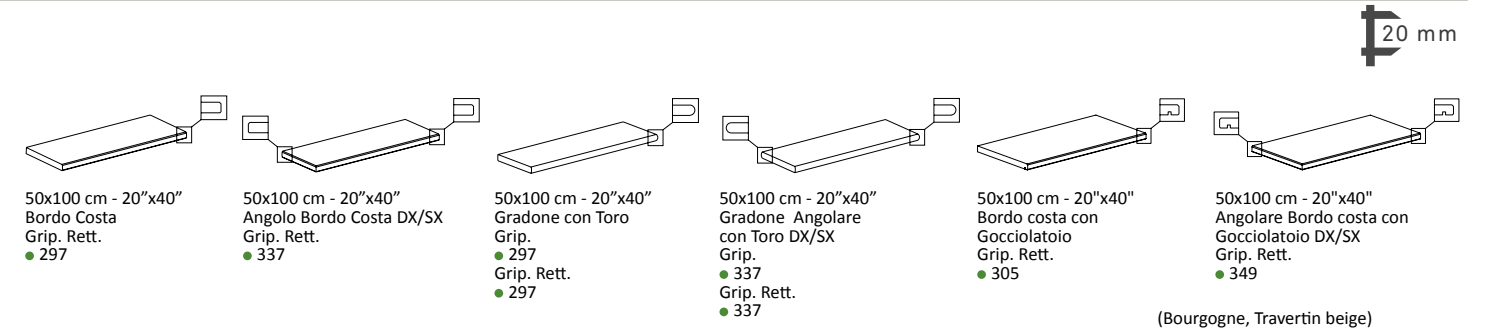
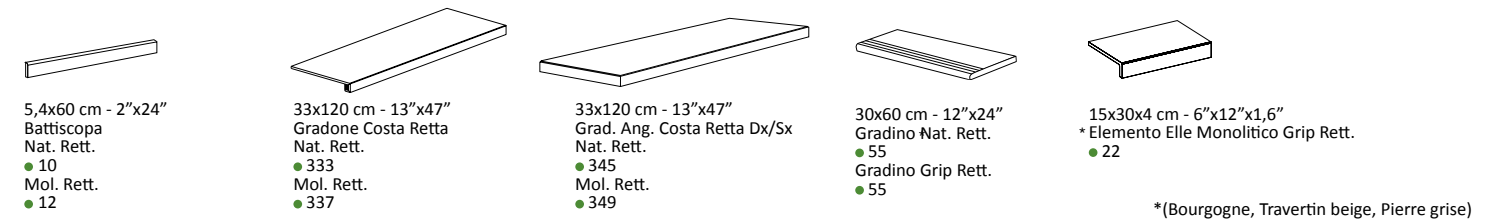


Formato	Pz	Pz. per Mq.	% per Mq
60x60	2	1,01	36,4 %
30x60	3	1,52	27,3 %
60x120	1	0,51	36,4 %



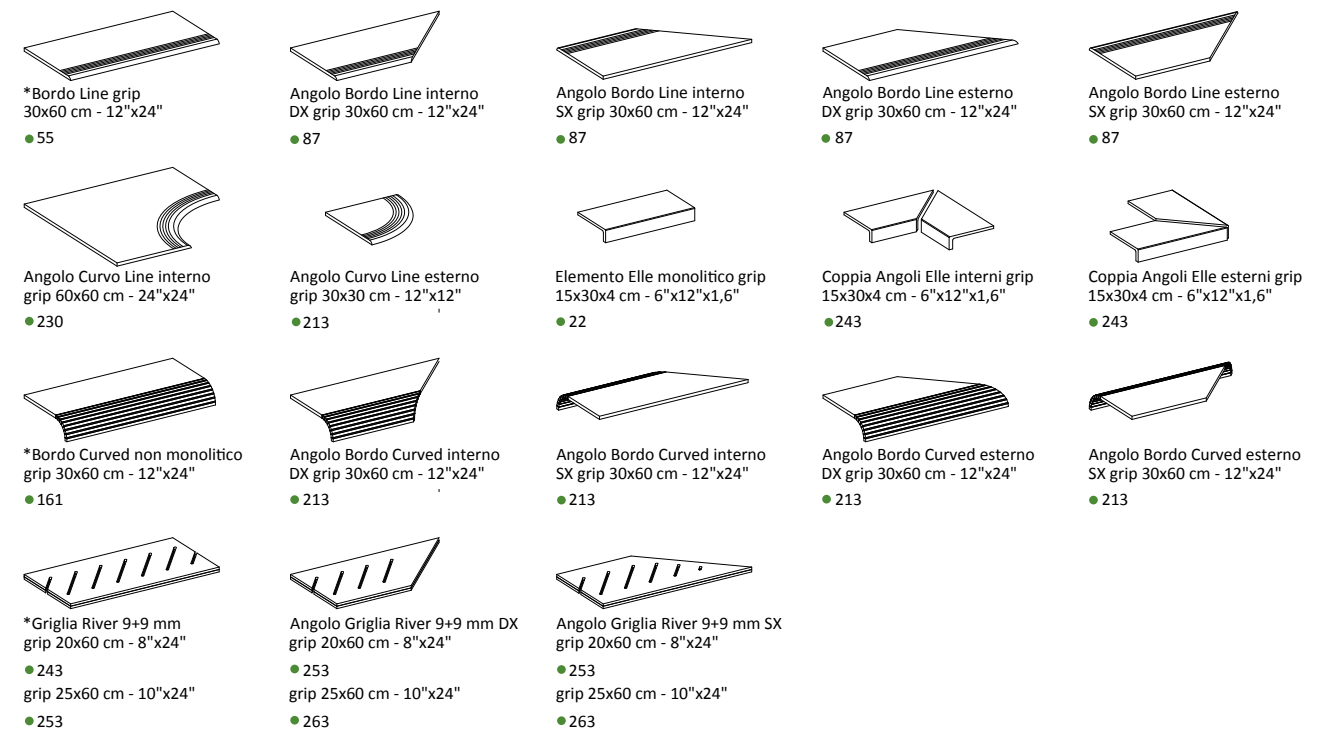
pezzi speciali - special pieces

9 mm



pezzi speciali - special pieces pools&wellness

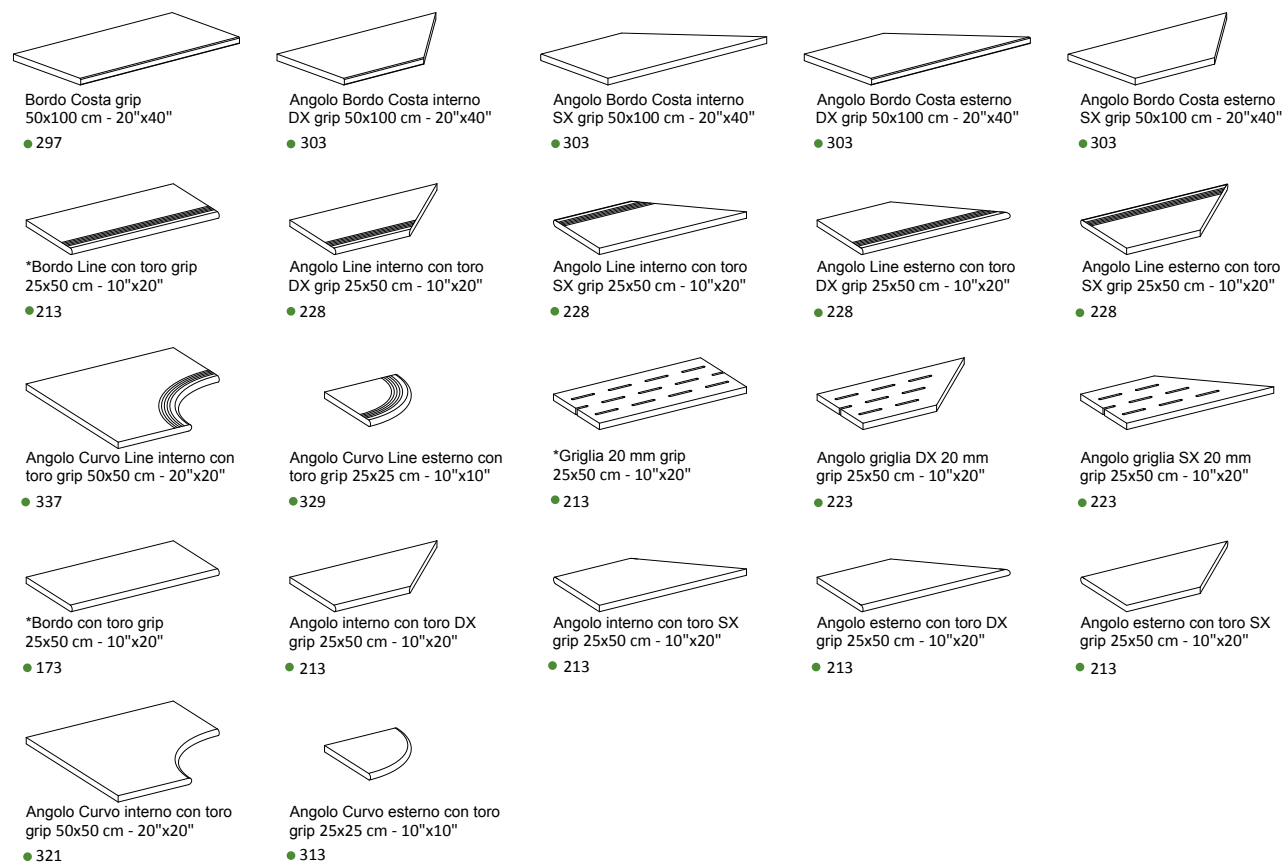
9 mm



* Prezzo per ordine minimo di 20 pezzi. Per quantitativi inferiori, rivolgersi agli uffici commerciali per una quotazione specifica.
Price for a minimum order of 20 items. For smaller volumes, please contact our commercial office for a specific quote.

pezzi speciali - special pieces pools&wellness

20 mm



(Bourgogne, Travertin beige)

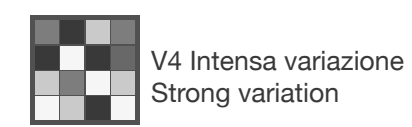
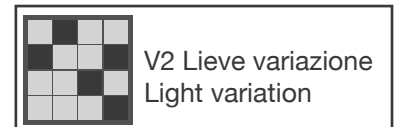
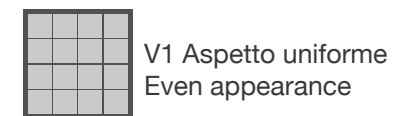
* Prezzo per ordine minimo di 20 pezzi. Per quantitativi inferiori, rivolgersi agli uffici commerciali per una quotazione specifica.
Price for a minimum order of 20 items. For smaller volumes, please contact our commercial office for a specific quote.

imballi - packaging

	120x120 cm 47"x47"	60x120 cm 24"x47" NAT.	60x120 cm 24"x47" MOL.	50x100 cm 20"x40" MAJOR	80x80 cm 31,5"x31,5" NAT.	80x80 cm 31,5"x31,5" MOL.	60x60 cm 24"x24"	30x60 cm 12"x 24"	30x30 cm 12"x 12"	10x30 cm 4"x12"
Pc.	2	2	2	1	2	2	3	6	13	30
M ²	2,88	1,44	1,44	0,5	1,28	1,28	1,08	1,08	1,17	0,9
Kg	58	31	30,5	22,5	26,2	25,5	22,50	22,50	23	18,1

	120x120 cm 47"x47"	60x120 cm 24"x47" NAT.	60x120 cm 24"x47" MOL.	50x100 cm 20"x40" MAJOR	80x80 cm 31,5"x31,5" NAT.	80x80 cm 31,5"x31,5" MOL.	60x60 cm 24"x24"	30x60 cm 12"x 24"	30x30 cm 12"x 12"	10x30 cm 4"x12"
Pc.	20	35	35	42	40	40	40	48	48	48
M ²	57,6	50,4	50,40	21	51,2	51,2	43,2	51,84	56,16	43,2
Kg	1160	1085	1067,5	945	1048	1020	900	1080	1104	868,8

variazioni cromatiche - colours variations



È indispensabile all'atto della posa, prelevare le piastrelle da più confezioni.

It is necessary to take the tiles from several different boxes when laying them.

categorie d'impiego - use categories

C1 Piastrelle da pavimento consigliate per calpestio lieve.
Floor tiles recommended for low traffic areas.

C4 Mol. Piastrelle da pavimento consigliate per calpestio medio.
Floor tiles recommended for medium traffic areas.

C2 Piastrelle da pavimento consigliate per calpestio leggero.
Floor tiles recommended for light traffic areas.

C5 Grip e Nat. Piastrelle da pavimento consigliate per calpestio intenso.
Floor tiles recommended for heavy uses.

C3 Piastrelle da pavimento consigliate per calpestio medio-leggero.
Floor tiles recommended for medium-light traffic areas.

Scivolosità - Slip resistance

	NORMA STANDARD	SUPERFICIE NATURALE NATURAL SURFACE	SUPERFICIE GRIP GRIP SURFACE	SUPERFICIE MOLATA BRUSHED SURFACE
	B.C.R.A. (D.M.I. n. 236 μ>0,4)	> 0,40	> 0,40	-
	ANSI A137.1 (DCOF WET >0,42)	> 0,42	> 0,42	> 0,42
	DIN EN 16165 Annex B	R10	R11	-
	DIN EN 16165 Annex A	A+B mosaico 4,7x4,7 A+B+C mosaico 2,5x2,5	A+B+C	-
	AS 4586	-	CLASS P4	-
	BS 7976	-	PTV ≥ 36 DRY / WET	-

PER I CERTIFICATI SPECIFICI, E VALORI PUNTUALI, CONTATTARE FINCIBEC SPA - FOR SPECIFIC CERTIFICATES AND DATA, CONTACT FINCIBEC S.P.A

note - notes

I prodotti possono essere modificati da Fincibec senza preavviso, respingendo ogni responsabilità su possibili danni diretti o indiretti causati da potenziali modifiche.
Fincibec reserves the right to modify its products without prior notice and cannot be held liable for direct or indirect damage caused by such modifications.


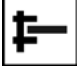


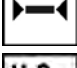

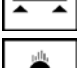










Verificare sempre la correttezza delle informazioni e dei dati relativi a codici, imballaggi e pesi, consultando il listino prezzi in vigore. Always refer to the price list in force to ensure correct information and data on codes, packaging, and weight.

Le tonalità dei colori riportate nel catalogo sono indicative. The colours shades, reported on the catalogue, are indicative.

CARATTERISTICHE TECNICHE / GRES FINE PORCELLANATO COLORATO IN MASSA

TECHNICAL SPECIFICATIONS / COLOURED PORCELAIN STONEWARE - TECHNISCHE EIGENSCHAFTEN / DURCHGEFÄRBTES FEINSTEINZEUG - CARACTÉRISTIQUES TECHNIQUES / GRÈS FIN CÉRAME COLORÉ EN MASSE - CARACTERÍSTICAS TÉCNICAS / GRES FINO PORCELÁNICO TENIDO EN MASA - ТЕХНИЧЕСКИЕ ХАРАКТЕРИСТИКИ / МЕЛКОЗЕРНИСТЫЙ КЕРАМОГРАНИТ, ОКРАШЕННЫЙ В МАССЕ

STANDARDS : UNI EN 14411 ANNEX G - B1a / UNI EN ISO 13006 ANNEX G - B1a

	CARATTERISTICHE TECNICHE TECHNICAL DATA TECHNISCHE DATEN CARACTERISTIQUES TECHNIQUES CARACTERÍSTICAS TÉCNICAS ТЕХНИЧЕСКИЕ ХАРАКТЕРИСТИКИ	TIPO DI PROVA STANDARD OF TEST NORME DU TEST TESTNORM TIPO DE PRUEBA ТИП ТЕСТА	VALORI PRESCRITTI DALLE NORME INTERNATIONAL STANDARDS INTERNATIONALE NORMWERTE VALEURS PREVUES PAR LES NORMES VALORES PREVISTOS POR LAS NORMAS ПРЕДУСМОТРЕННЫЕ СТАНДАРТОМ		VALORE MEDIO MONOCIBEC MONOCIBEC AVERAGE VALUE MONOCIBEC MITTELWERT VALEURS MOYEN MONOCIBEC VALOR MEDIO MONOCIBEC СРЕДНЕЕ ЗНАЧЕНИЕ MONOCIBEC		
			REQUIREMENTS FOR NOMINAL SIZE N		NAT.	MOL.	GRIP
			7 cm ≤ N ≤ 15 cm	N ≥ 5 cm			
	LATI SIDES - SEITEN COTES - CANTOS РАЗМЕРЫ СТОРОН	EN ISO 10545-2	± 0,9 mm	± 0,6% (± 2,0 mm)	CONFORME COMPLYING - ERFÜLLT CONFORME - CONFORME COOBTETCTBYET		
	SPESSORE THICKNESS - DICKE ÉPAISSEUR - ESPESOR ТОЛЩИНА	EN ISO 10545-2	± 0,5 mm	± 5,0% (± 0,5 mm)	CONFORME COMPLYING - ERFÜLLT CONFORME - CONFORME COOBTETCTBYET		
	RETTILINEITÀ DEGLI SPIGOLI STRAIGHTNESS OF SIDES - GERADLINIGKEIT DER KANTEN RECTITUDE DES ARETES - RECTIDUD DE LOS CANTOS - КОСОУГОЛЬНОСТЬ	EN ISO 10545-2	± 0,75 mm	± 0,5% (± 1,5 mm)	CONFORME COMPLYING - ERFÜLLT CONFORME - CONFORME COOBTETCTBYET		
	ORTOGONALITÀ RECTANGULARITY - RECHTWINKLIGKEIT PERPENDICULARITÉ - ORTOGONALIDAD КРЯВИЗНА СТОРОН	EN ISO 10545-2	± 0,75 mm	± 0,5% (± 2 mm)	CONFORME COMPLYING - ERFÜLLT CONFORME - CONFORME COOBTETCTBYET		
	PLANARITÀ SURFACE FLATNESS - EBENFLÄCHIGKEIT PLANEITE DE SURFACE - PLANEIDAD КРЯВИЗНА ЛИЦЕВОЙ ПОВЕРХНОСТИ	EN ISO 10545-2	± 0,75 mm	± 0,5% (± 2,0 mm)	CONFORME COMPLYING - ERFÜLLT CONFORME - CONFORME COOBTETCTBYET		
	ASSORBIMENTO D'ACQUA WATER ABSORPTION - WASSERAUFNAHME ABSORPTION D'EAU - ABSORCIÓN DE AGUA ВОДОПОГЛОЩЕНИЕ	EN ISO 10545-3	≤ 0,5 %		≤ 0,1 %		
	RESISTENZA ALLA FLESSIONE FLEXION RESISTANCE - BIEGEFESTIGKEIT RESISTANCE A LA FLEXION - RESISTENCIA A LA FLEXIÓN ПРЕДЕЛ ПРОЧНОСТИ ПРИ ИЗГИБЕ	EN ISO 10545-4	S ≥ 1.300 N R ≥ 35 N/mm ² .		CONFORME COMPLYING - ERFÜLLT CONFORME - CONFORME COOBTETCTBYET		
	RESISTENZA ALL'URTO IMPACT RESISTANCE - STOSSFESTIGKEIT RESISTANCE AUX CHOCES - RESISTENCIA A LOS GOLPES УДАРОСТОЙКОСТЬ	EN ISO 10545-5	VALORE DICHIARATO DECLARED VALUE - ANGEGEBENER WERT VALEUR DÉCLARÉE - VALOR DECLARADO - ЗАЯВЛЕННОЕ ЗНАЧЕНИЕ		> 0,80		
	COEFFICIENTE DI DILATAZIONE TERMICA LINEARE COEFFICIENT OF LINEAR THERMAL EXPANSION - LINEARER WÄRMEAUSENDENUNGSKOEFFIZIENT COEFFICIENT DE DILATATION THERMIQUE LINEAIRE - COEFICIENTE DE DILATACIÓN TÉRMICA LINEAL КОЭФФИЦИЕНТ ЛИНЕЙНОГО ТЕРМИЧЕСКОГО РАСШИРЕНИЯ	EN ISO 10545-8	VALORE DICHIARATO DECLARED VALUE - ANGEGEBENER WERT VALEUR DÉCLARÉE - VALOR DECLARADO - ЗАЯВЛЕННОЕ ЗНАЧЕНИЕ		α = 6,7 × 10 ⁻⁶ / °C		
	RESISTENZA AGLI SBALZI TERMICI RESISTANCE TO THERMAL SHOCKS - BESTÄNDIGKEIT GEGEN TEMPERATURSCHWANKUNGEN RESISTANCE AUX CHOCES THERMIQUES - RESISTENCIA A LOS CHOQUES TÉRMICOS СТОЙКОСТЬ К ПЕРЕПАДАМ ТЕМПЕРАТУРЫ	EN ISO 10545-9	TEST SUPERATO SECONDO EN ISO 10545-1 TEST PASSED ACCORDING TO - TEST BESTANDEN NACH TEXTE DÉPASSÉ SELON - PRUEBA SUPERADA SEGÜN ИСПЫТАНИЕ ПРОЙДЕНО В СООТВЕТСТВИИ С		NESSUN DANNO NO DAMAGE - KEIN SCHADEN AUCUN DOMMAGE - NINGUN DANO БЕЗ ПОВРЕЖДЕНИЙ		
	DILATAZIONE ALL'UMIDITÀ (IN MMM) MOISTURE EXPANSION (IN MMM) - FEUCHTIGKEITSBEDINGTE AUSDEHNUNG (IN MMM) DILATATION À L'HUMIDITÉ (EN MMM) - DILATACIÓN CON LA HUMEDAD (EN MMM) ВЛАЖНОСТНОЕ РАСШИРЕНИЕ (В МММ)	EN ISO 10545-10	VALORE DICHIARATO DECLARED VALUE - ANGEGEBENER WERT VALEUR DÉCLARÉE - VALOR DECLARADO - ЗАЯВЛЕННОЕ ЗНАЧЕНИЕ		MAX 0,1 mm / m		
	RESISTENZA AL GELO FROST RESISTANCE - FROSTBESTÄNDIGKEIT RESISTANCE AU GEL - RESISTENCIA AL HIELO МОРОЗОСТОЙКОСТЬ	EN ISO 10545-12	TEST SUPERATO SECONDO EN ISO 10545-1 TEST PASSED ACCORDING TO - TEST BESTANDEN NACH TEXTE DÉPASSÉ SELON - PRUEBA SUPERADA SEGÜN ИСПЫТАНИЕ ПРОЙДЕНО В СООТВЕТСТВИИ С		NESSUN DANNO NO DAMAGE - KEIN SCHADEN AUCUN DOMMAGE - NINGUN DANO БЕЗ ПОВРЕЖДЕНИЙ		
	RESISTENZA AI PRODOTTI CHIMICI USO DOMESTICO E ADDITIVI PER PISCINA RESISTANCE TO HOUSEHOLD AND SWIMMING POOL CHEMICAL PRODUCTS - RBESTÄNDIGKEIT GEGEN HAUSHALTSCHEMIKALIEN UND ZUSATZSTOFFE FÜR SWIMMINGPOOLS - RESISTANCE AUX PRODUITS CHIMIQUES USAGE DOMESTIQUE ET ADDITIFS POUR PISCINE - RESISTENCIA A LOS PRODUCTOS QUÍMICOS DE USO DOMÉSTICO Y ADITIVOS PARA PISCINA - СТОЙКОСТЬ К ДЕЙСТВИЮ БЫТОВЫХ ХИМИЧЕСКИХ СРЕДСТВ, ДОБАВКАМ В БАССЕЙНЫ	EN ISO 10545-13	B MIN		CONFORME COMPLYING - ERFÜLLT CONFORME - CONFORME COOBTETCTBYET		
	RESISTENZA A BASSE CONCENTRAZIONI DI ACIDI E ALCALI RESISTANCE TO LOW CONCENTRATIONS OF ACIDS AND ALKALI - BESTÄNDIGKEIT BEI NIEDRIGEN KONZENTRATIONEN VON SÄUREN UND LAUGEN - RESISTANCE À BASSES CONCENTRATIONS D'ACIDES ET ALCALIS - RESISTENCIA A BAJAS CONCENTRACIONES DE ÁCIDOS Y ALCALIS - СТОЙКОСТЬ К ДЕЙСТВИЮ НИЗКИХ КОНЦЕНТРАЦИЙ КИСЛОТ И ЩЕЛОЧЕЙ	EN ISO 10545-13	VALORE DICHIARATO DECLARED VALUE - ANGEGEBENER WERT VALEUR DÉCLARÉE - VALOR DECLARADO - ЗАЯВЛЕННОЕ ЗНАЧЕНИЕ		CONFORME COMPLYING - ERFÜLLT CONFORME - CONFORME COOBTETCTBYET		
	RESISTENZA AD ALTE CONCENTRAZIONI DI ACIDI E ALCALI RESISTANCE TO HIGH CONCENTRATIONS OF ACIDS AND ALKALI - BESTÄNDIGKEIT BEI HOHEN KONZENTRATIONEN VON SÄUREN UND LAUGEN - RESISTANCE À HAUTES CONCENTRATIONS D'ACIDES ET ALCALIS - RESISTENCIA A ALTAS CONCENTRACIONES DE ÁCIDOS Y ALCALIS - СТОЙКОСТЬ К ДЕЙСТВИЮ ВЫСОКИХ КОНЦЕНТРАЦИЙ КИСЛОТ И ЩЕЛОЧЕЙ	EN ISO 10545-13	VALORE DICHIARATO DECLARED VALUE - ANGEGEBENER WERT VALEUR DÉCLARÉE - VALOR DECLARADO - ЗАЯВЛЕННОЕ ЗНАЧЕНИЕ		CONFORME COMPLYING - ERFÜLLT CONFORME - CONFORME COOBTETCTBYET		
	RESISTENZA ALLE MACCHIE RESISTANCE TO STAINS - FLECKENBESTÄNDIGKEIT RESISTANCE AUX TACHES - RESISTENCIA A LAS MANCHAS УСТОЙЧИВОСТЬ К ПЯТНООБРАЗОВАНИЮ	EN ISO 10545-14	VALORE DICHIARATO DECLARED VALUE - ANGEGEBENER WERT VALEUR DÉCLARÉE - VALOR DECLARADO - ЗАЯВЛЕННОЕ ЗНАЧЕНИЕ		CONFORME COMPLYING - ERFÜLLT CONFORME - CONFORME COOBTETCTBYET		
	CESSIONE DI PIOMBO E CADMIO LEAD AND CADMIUM DISCHARGE - ABGABE VON BLEI UND CADMIUM PERTE DE PLOMB ET CADMIUM - CESIÓN DE PLOMO Y CADMIO ВЫДЕЛЕНИЕ СВИНЦА И КАДМИЯ	EN ISO 10545-15	VALORE DICHIARATO DECLARED VALUE - ANGEGEBENER WERT VALEUR DÉCLARÉE - VALOR DECLARADO - ЗАЯВЛЕННОЕ ЗНАЧЕНИЕ		< AL LIMITE DI RILEVAMENTO < THAN INSTRUMENT LIMIT < UNMESSBARES WERT < LIMITE DE L'INSTRUMENT < LIMITE DEL INSTRUMENTO < НА ПРЕДЕЛЕ ОПРЕДЕЛИМОСТИ		

PER I CERTIFICATI SPECIFICI, E VALORI PUNTIUALI, CONTATTARE FINCIBEC SPA - FOR SPECIFIC CERTIFICATES AND DATA, CONTACT FINCIBEC S.P.A. - FÜR SPEZIELLE ZERTIFIKATE UND PUNKTWERTE, FINCIBEC S.P.A. KONTAKTIEREN - POUR LES CERTIFICATS SPÉCIFIQUES ET LES VALEURS PONCTUELLES, CONTACTER FINCIBEC S.P.A. - PARAL OS CERTIFICADOS ESPECÍFICOS Y LOS VALORES CONCRETOS, CONTACTE CON FINCIBEC S.P.A. - ВО ВОПРОСАМ СПЕЦИАЛЬНЫХ СЕРТИФИКАТОВ И ПОКАЗАТЕЛЕЙ СВЯЖИТЕСЬ С FINCIBEC SPA

ESCLUSO PEZZI SPECIALI ED ELEMENTI DECORATIVI - WITH THE EXCEPTION OF SPECIAL PIECES AND DECORS - A L'EXCEPTION DE PIÈCES SPÉCIALES ET ÉLÉMENTS DÉCORATIFS - AUSSCHLIEBLICH FORMSTÜCKE UND DEKORTEILE



★ ★ ★ ★ ★
MONOCIBEC®
FINCIBEC GROUP



MONOCIBEC

Via Valle d'Aosta, 47 - 41049 - Sassuolo (Mo) Italy

Tel. +39 0536 861300
Fax Italia +39 0536 861400
Fax Export Dept. +39 0536 861450
info@monocibec.it
www.monocibec.it

Fincibec S.p.A.

Sede legale: Via Valle d'Aosta, 47 - 41049 - Sassuolo (Mo) Italy
Gruppo Fire S.R.L.

Fincibec USA Inc.

420 Columbus Avenue, Valhalla NY 10595 - USA
info@fincibecusa.com



**RECYCLED
CONTENT**



EN 14411



Fincibec S.p.A è socio di:

