

SARTORIA^{est.} 2018



Vernici

SARTORIA[®] est. 2018

2018: Sartoria is created, combining the knowledge with the understanding of modern ceramic history. A tailored project for all those who love interior design, small sizes, colour and decoration. From these four elements a new chapter within Terratinta Group is born, aiming to create a new style that can be exported all over the world.

Just like the detailed and creative creations of a tailor, Sartoria designs and fulfils distinguished ideas, giving new life to the craftsmanship of the small ceramic size. From white-body walls to gres porcelain tiles, different options designed for small and wide spaces: a unique, contrasting design, a choice between styles, a choice of style.

Dall'esperienza di una storia ceramica recente senza precedenti, nel 2018 nasce Sartoria. Un progetto su misura per chi ama l'interior design, il piccolo formato, il colore e la decorazione. Da questi quattro elementi nasce un nuovo capitolo all'interno di Terratinta Group, con l'obiettivo di creare un nuovo stile esportabile in tutto il mondo. Così come le creazioni di un sarto, meticolose e creative, Sartoria disegna e realizza grandi idee, dando nuova vita all'artigianalità del piccolo formato ceramico. Dal rivestimento in pasta bianca al porcellanato, diverse combinazioni pensate per piccoli e grandi spazi: un design unico, contrastante, una scelta di stili e di stile.





THE SECOND CHAPTER OF THE NEW SARTORIA BRAND IS A COLLECTION THAT STARTS FROM COLOR, IN 5X25CM SIZE.

Vernici is a collection that starts from color, in 14 original, bold and blasting hues. Extruded white body ceramic in 5x25cm size, 10mm thickness with irregular edges, in different moulds with a shiny effect giving a craftsmanship look: a unique color palette created specifically upon the latest trends within interior design and wall coverings.

From neutral colors to green's, blue's, pink's, yellow and metal shades: Sartoria keeps on its research within small sizes, this time with a project where colors and eclectic identities are playing the main role.

IL SECONDO CAPITOLO DEL NUOVO BRAND SARTORIA E' UNA COLLEZIONE CHE PARTE DAL COLORE, NEL FORMATO 5X25 CM.

Vernici è una collezione che parte dal colore, in 14 varianti tutte da scoprire. Ceramica estrusa in pasta bianca 5x25cm, spessore 10mm con bordi irregolari, in tamponi differenti con effetto lucido per proporre un sapore artigianale: una gamma colori unica creata studiando le ultime tendenze nel design di interni e delle pitture.

Dai colori neutri alle sfumature di verdi, blu, rosa, fino al giallo e al metallo: Sartoria continua la sua ricerca all'interno del piccolo formato, questa volta con un progetto in cui i colori e le identità eclettiche giocano il ruolo principale.









Vernici

10

packaging

37

technical features

38

VERNICI

Extruded white body ceramic tiles, only
for walls, **5x25cm.**

Piastrelle ceramiche estruse in pasta
bianca, solo per rivestimento, **5x25cm.**

± 10mm

glossy







White xmas

Early morning

Whitexmas
5x25cm









Heavy storm



Hot mocha

Heavy storm
5x25cm



Hot mocha
5x25cm







Dark sky

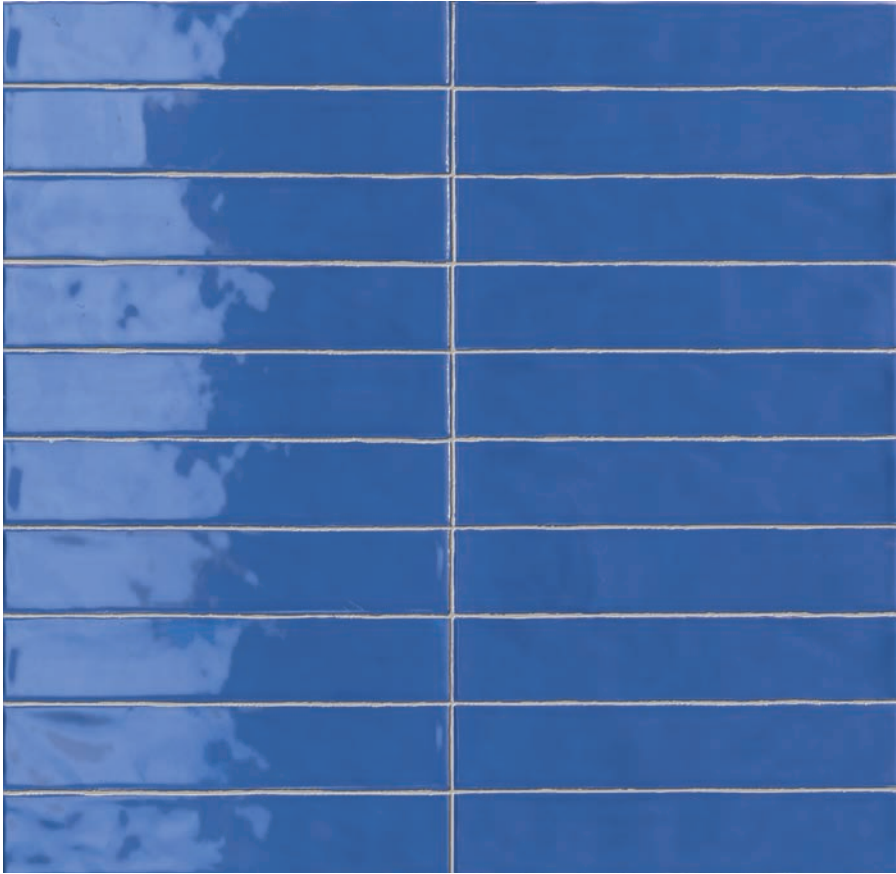


Mustard mayo





Cloudy azure



Salty harbor



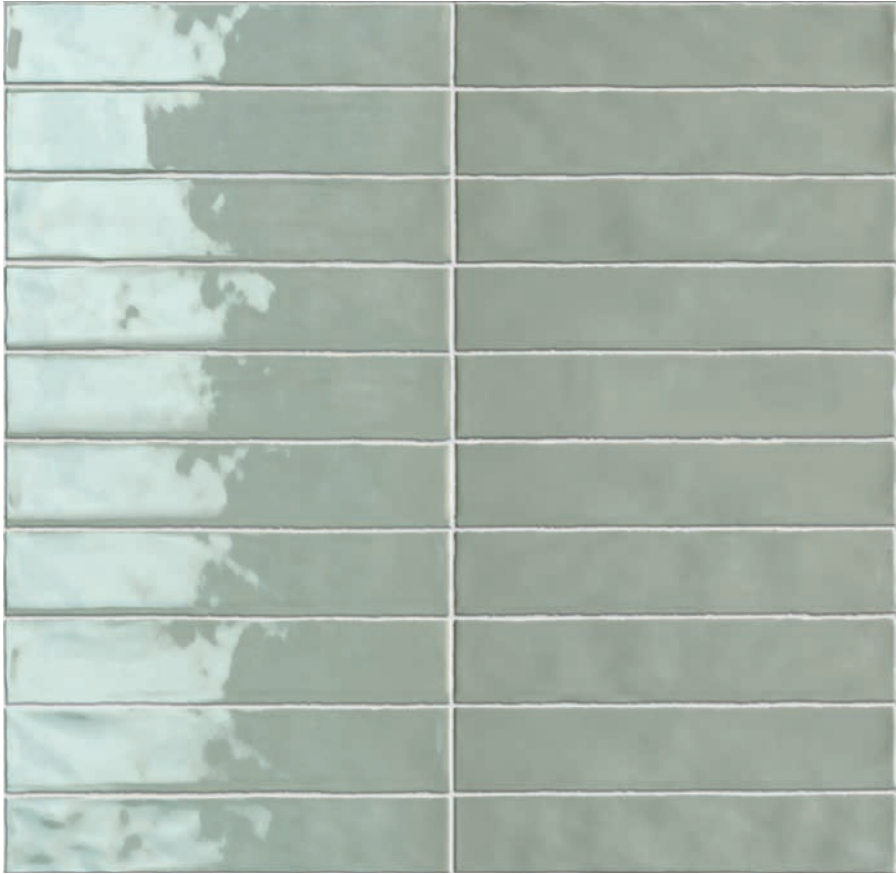
Posh blue



Posh blue
5x25cm







Summer vibes



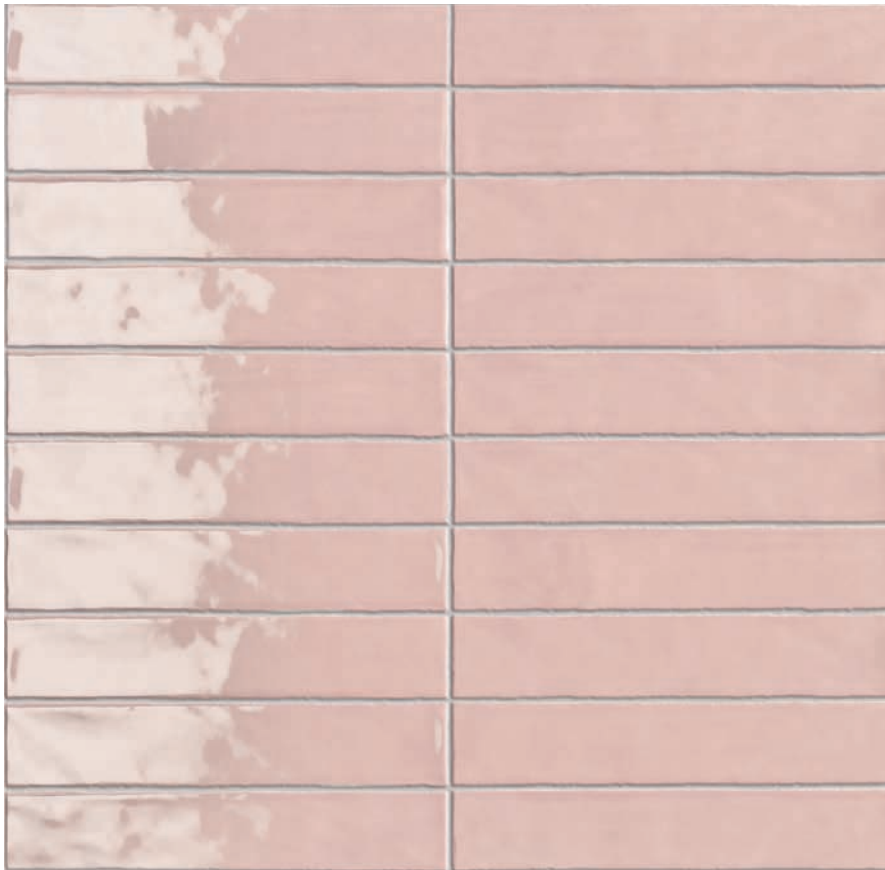
Jungle jam

Summer vibes
5x25cm





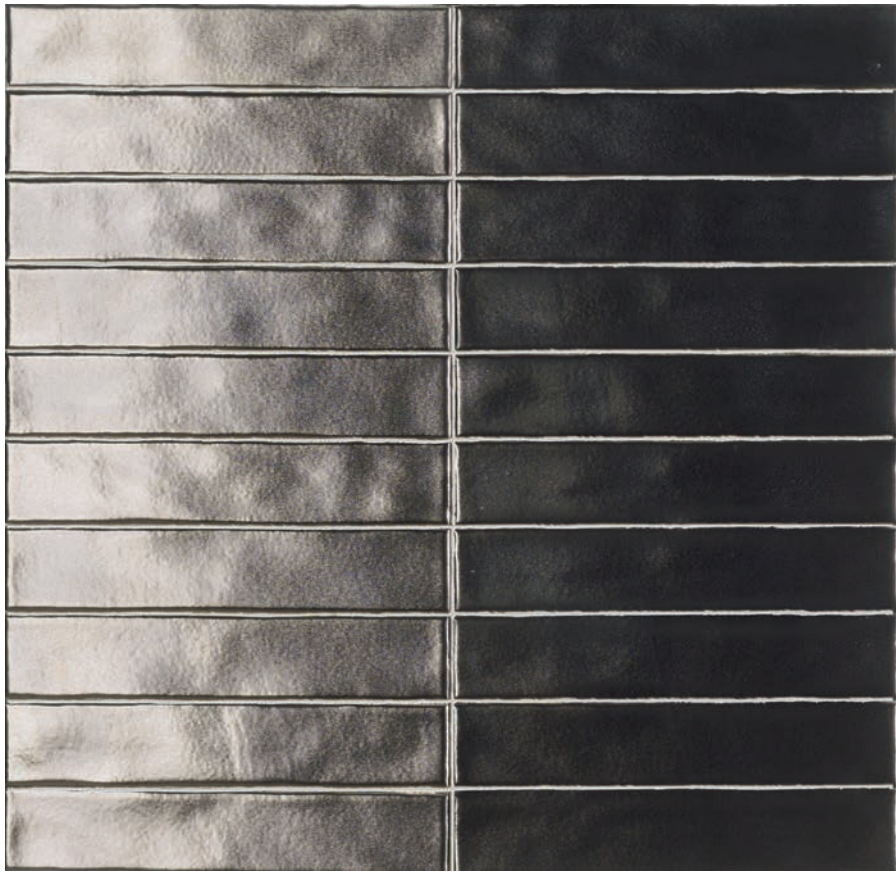




Baby pink



Berry daiquiri



Shine on

Baby pink
5x25cm





VERNICI

| SUMMARY | SERIE

5x25cm 2"x9^{27/32"} | *walls only* | *solo rivestimento* ± 10mm glossy



White xmas



Salty harbor



Early morning



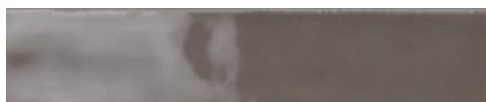
Posh blue



Heavy storm



Summer vibes



Hot mocha



Jungle jam



Dark sky



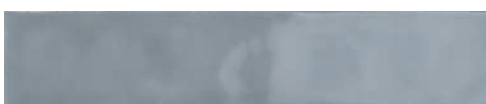
Baby pink



Mustard mayo



Berry daiquiri






Cloudy azure



Shine on

| PACKAGING | IMBALLI

	 BOX SCATOLA			 PALLET		
	PCS PZ	SQ.MT. MQ	KG	BOXES SCATOLE	SQ.MT. MQ	KG
 5x25cm glossy 2"x9 ^{27/32} "	48	0,60	9,40	96	57,60	922

| TECHNICAL FEATURES | CARATTERISTICHE TECNICHE





TECHNICAL SPECIFICATIONS FOR EXTRUDED CERAMIC TILES

CONFORMING TO EN 14411 ISO 13006 STANDARDS ANNEX F GROUP AIII GL EB > 10%

CARATTERISTICHE TECNICHE CERAMICA ESTRUSA Conformi a norme EN 14411 ISO 13006 Appendice F Gruppo AIII GL EB > 10%

TECHNISCHE EIGENSCHAFTEN STRANGEZOGENEN FLIESEN Gemäß den Normen EN 14411 ISO 13006 Appendix F Gruppe AIII GL EB > 10%

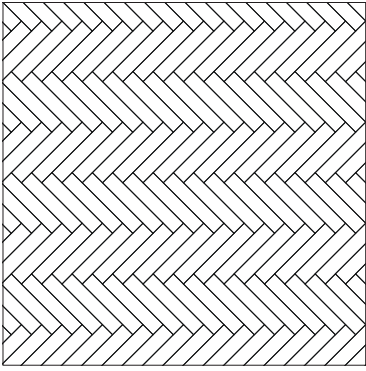
CARACTÉRISTIQUES TECHNIQUES POUR CARREAUX CÉRAMIQUES EXTRUDÉES Conformes aux normes EN 14411 ISO 13006 Appendice F Groupe AIII GL EB > 10%

	TECHNICAL FEATURES CARATTERISTICHE TECNICHE TECHNISCHE DATEN CARACTERISTIQUES TECHNIQUES	TESTING METHOD METODICA DI PROVA PRÜFVERFAHREN NORME D'ESSAIS	TEST RESULTS VALORE PRODOTTO PRODUKT WERTE VALEUR PRODUIT
	Water absorption Assorbimento d'acqua Wasseraufnahme Absorption d'eau	EN ISO 10545-3	E _b >10%
	Breaking strength Carico di rottura Bruchlast Charge de rupture	UNI EN ISO 10545-4	> 600 N
	Glaze crazing resistance Determinazione della resistenza al cavillo Glasurhaarrißbeständigkeit Résistance aux taches	UNI EN ISO 10545-11	Resistant Resistente Widerstandsfähig Résistant
	Chemical resistance Resistenza ai prodotti chimici Chemikalienbeständigkeit Résistance aux produits chimiques	UNI EN ISO 10545-14 UNI EN ISO 10545-13	Min. class 3 Min. class B

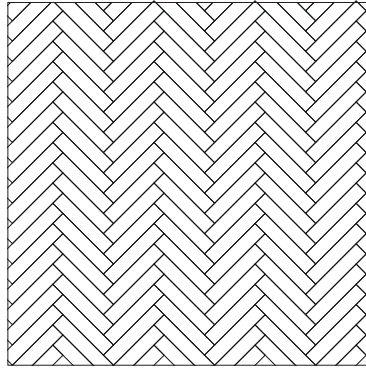


V2 MODERATE

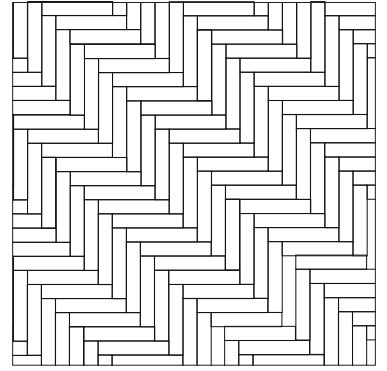
| LAYING SCHEMES | SCHEMI DI POSA



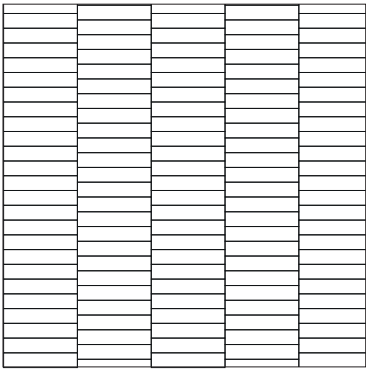
POSA 1



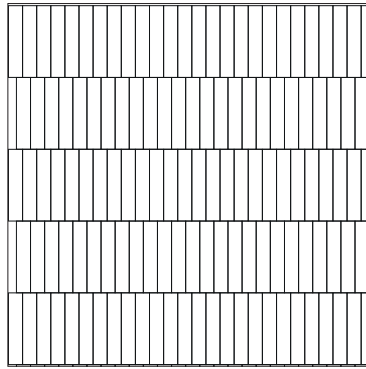
POSA 2



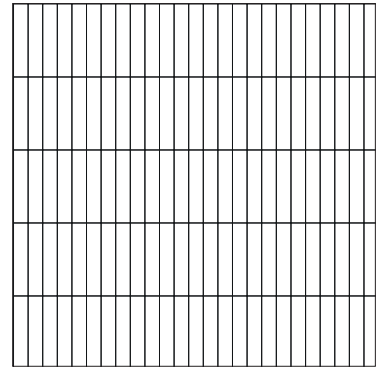
POSA 3



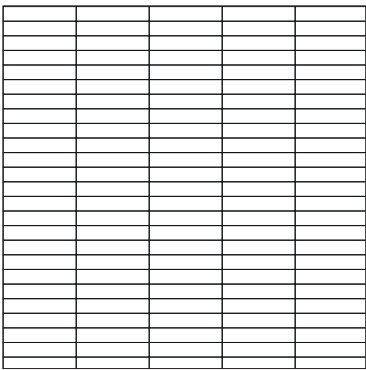
POSA 4



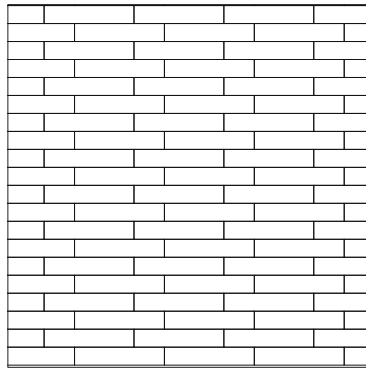
POSA 5



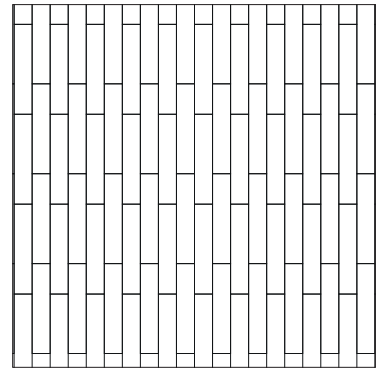
POSA 6



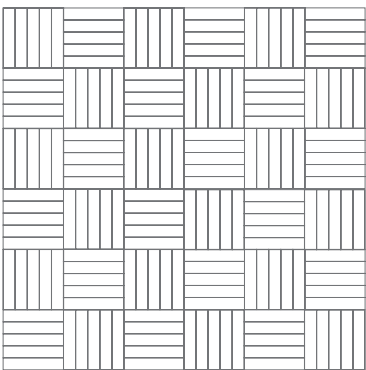
POSA 7



POSA 8



POSA 9

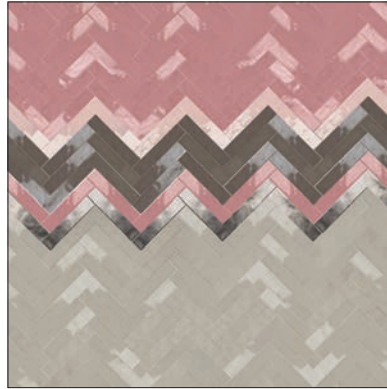


POSA 10

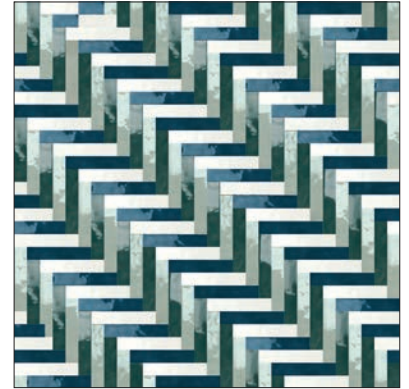
| LAYING SCHEMES | SCHEMI DI POSA



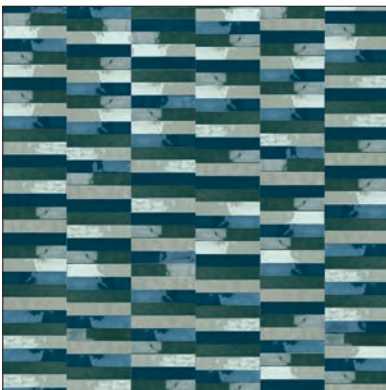
35% Salty Harbor
11% Cloudy Azure
11% Mustard Mayo
43% White Xmas
POSA 1



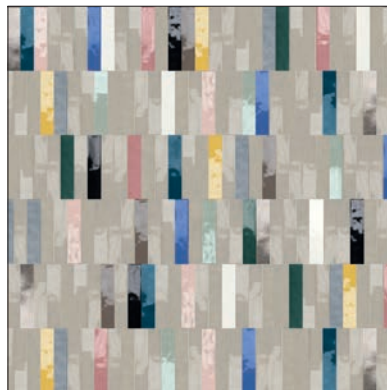
33% Berry Daiquiri
5% Baby Pink
16% Hot Mocha
5% Shine On
41% Early Morning
POSA 2



25% Jungle jam
25% Summer Vibes
25% Posh Blue
25% White Xmas
POSA 3



33% Posh Blue
33% Jungle Jam
33% Summer Vibes
POSA 4



67% Early Morning
33% mix colors
POSA 5



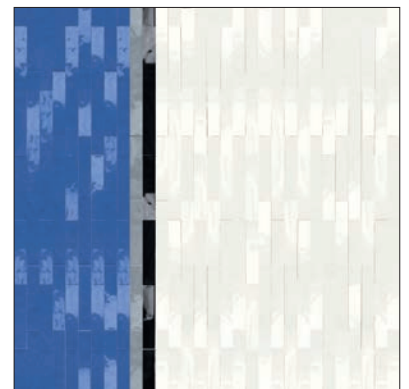
33% Posh Blue
33% Jungle Jam
33% Mustard Mayo
POSA 6



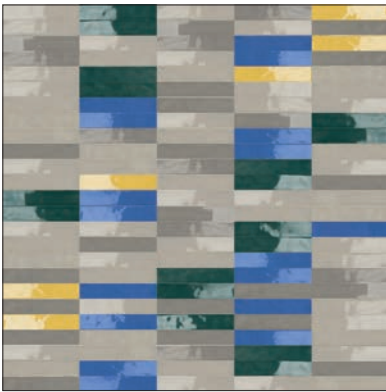
33% Hot Mocha
33% Heavy Storm
33% Early Morning
POSA 7



35% Berry Daiquiri
60% Baby Pink
5% Shine On
POSA 8

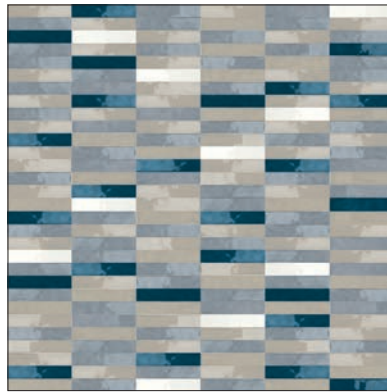


37% Salty Harbor
53% White Xmas
5% Dark Sky
5% Cloudy Azure
POSA 9



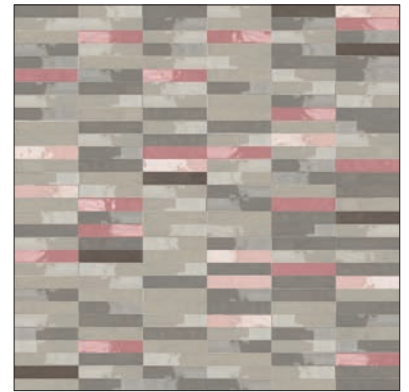
15% Salty Harbor
 15% Jungle Jam
 5% Mustard Mayo
 40% Early Morning
 25% Heavy Storm

POSA 7



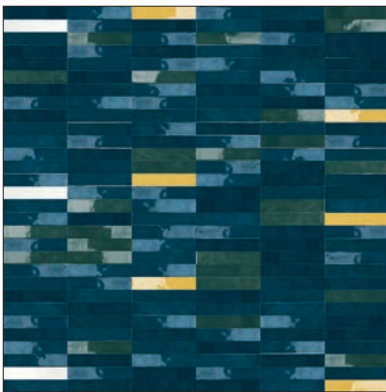
18% Summer Vibes
 14% Hot Mocha
 21% Jungle Jam
 21% Mustard Mayo
 14% Baby Pink
 12% Berry Daiquiri

POSA 7



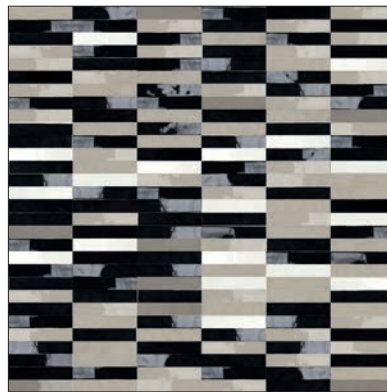
22% Posh blue
 22% Mustard Mayo
 28% Cloudy Azure
 28% Early Morning

POSA 7



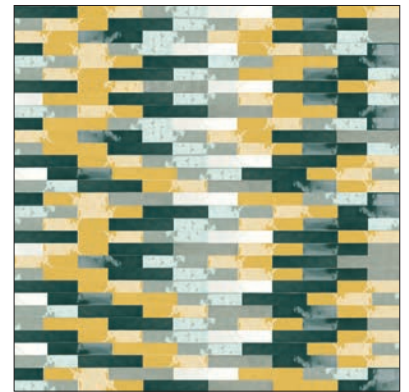
75% Posh Blue
 7% Mustard Mayo
 14% Jungle Jam
 4% White Xmas

POSA 7



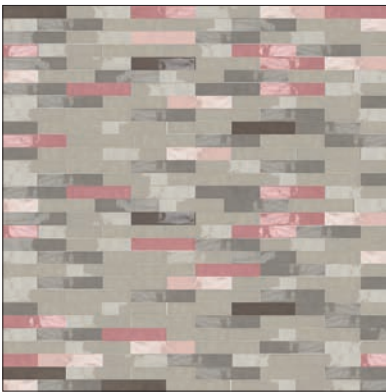
55% Dark Sky
 27% Early Morning
 8% Heavy Storm
 10% White Xmas

POSA 7



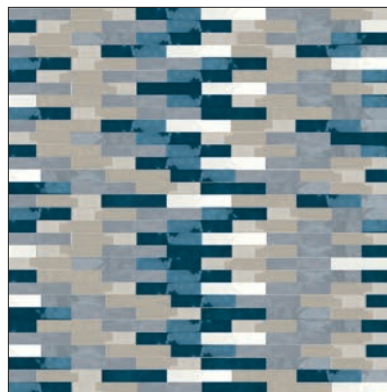
34% Jungle Jam
 31% Mustard Mayo
 26% Summer Vibes
 9% White Xmas

POSA 8



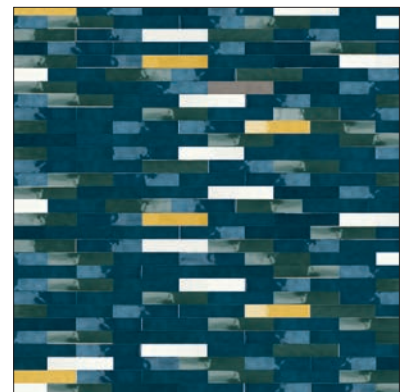
6% Hot Mocha
 42% Early Morning
 25% Heavy Storm
 12% Baby Pink
 15% Berry Daiquiri

POSA 8



31% Early Morning
 22% Posh Blue
 34% Cloudy Azure
 13% White Xmas

POSA 8



74% Posh Blue
 5% Mustard Mayo
 13% Jungle Jam
 8% White Xmas

POSA 8

Make it
worth it.

SARTORIA® est. 2018
small tailored ceramic tiles

brand of **TERRATINTA GROUP SRL**

55, via Monte Bianco
41042 Fiorano Modenese (MO) | Italy
T +39 0536911408 F +39 05361940223
W sartoria.design | terratintagroup.com